



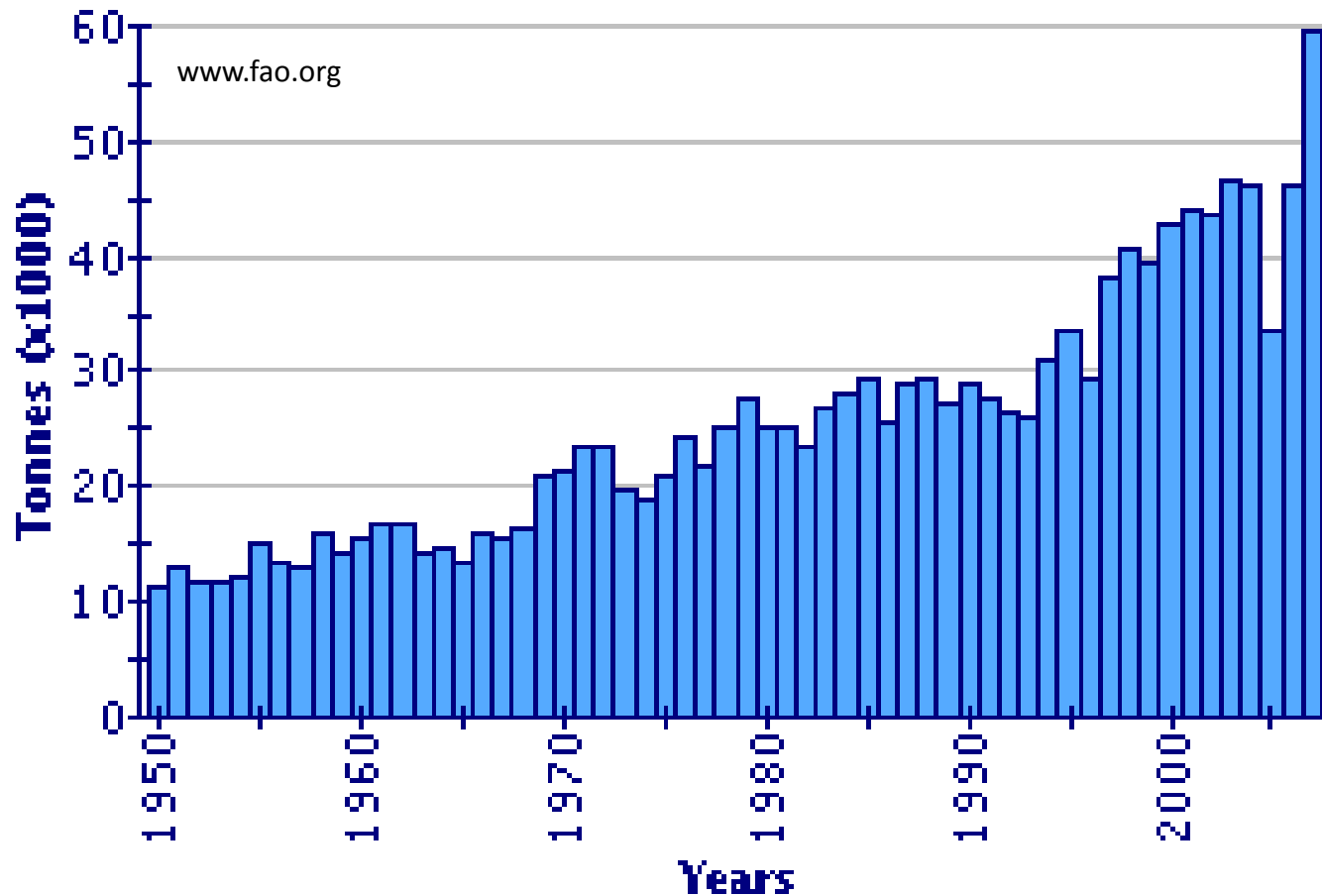
Ressurskartleggingen av taskekrabbe 2001-2011

Krabbekonferansen, Trondheim 11.-12. januar 2011

Guldborg Søvik
Havforskningsinstituttet
Bergen

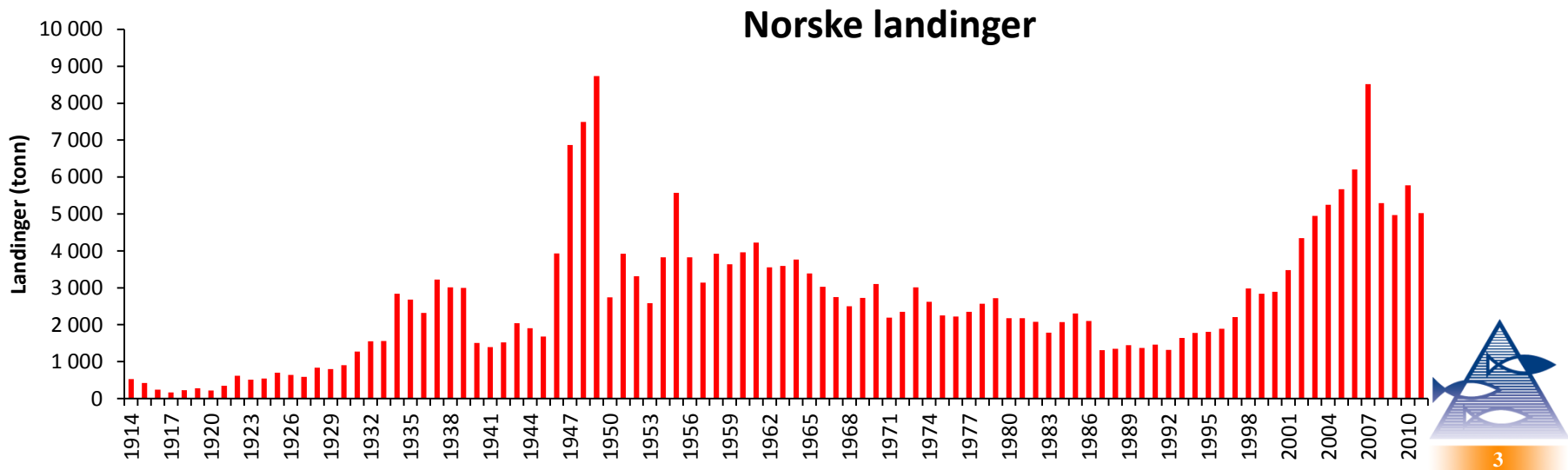


Globale landinger



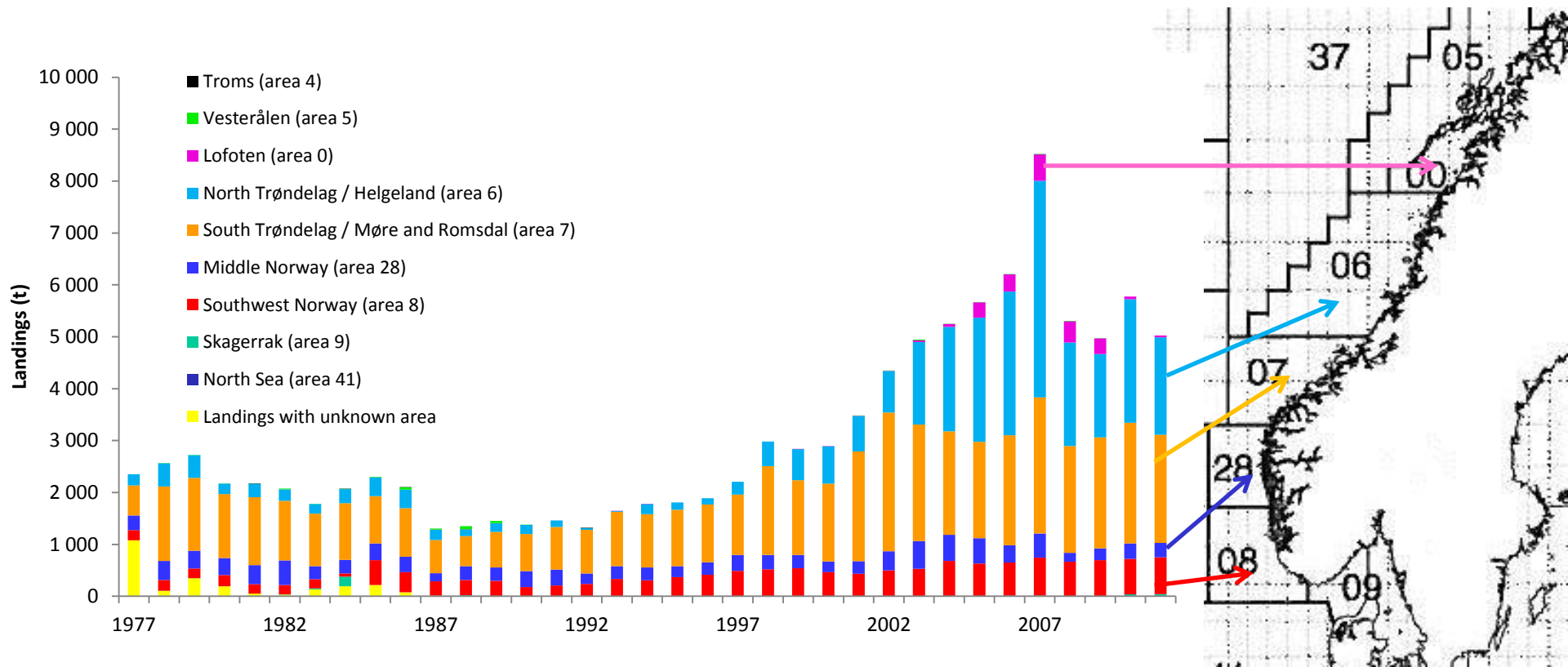
Norsk krabbefiske

- Startet opp på begynnelsen av 1900-tallet, hovedsakelig på vestkysten.
- Landingene økte frem til 2007.
 - Nye fiskeområder.
 - Utbredelsen til krabben økte nordover pga varmere hav.
- Lavere landinger i 2008-2009 skyldtes dårligere markedsforhold i Europa, men dette forbedret seg i 2010. 2011?
- Ingen kvoter eller adgangsbegrensning. Minstestørrelse.



Norsk krabbefiske

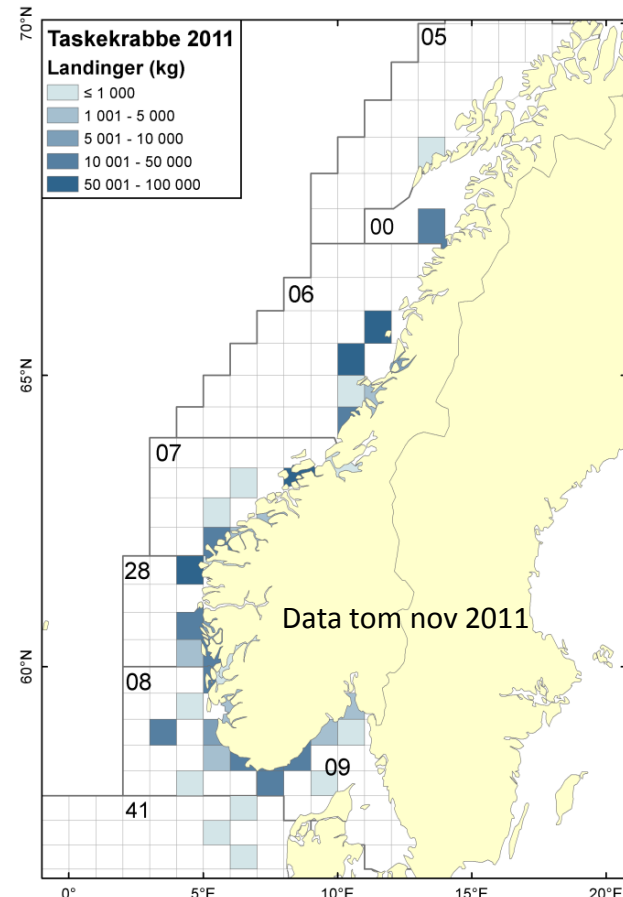
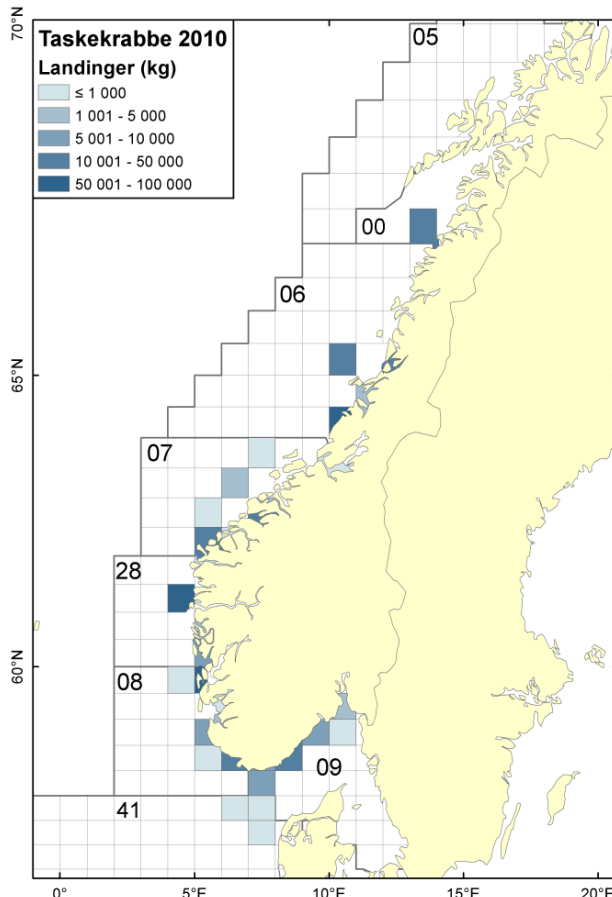
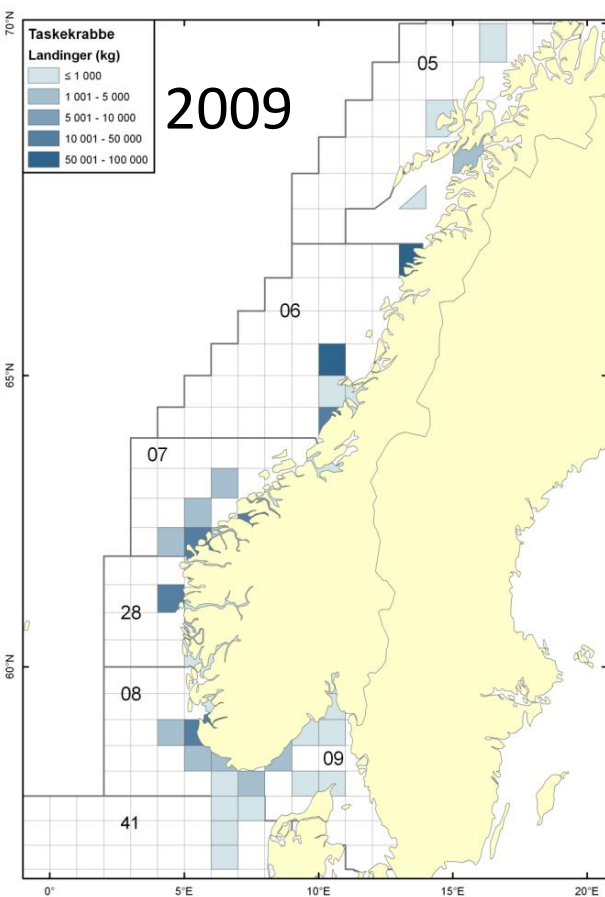
- Hovedområde: Trøndelag og Helgeland



Romlig fordeling av fisket, 2009-2011

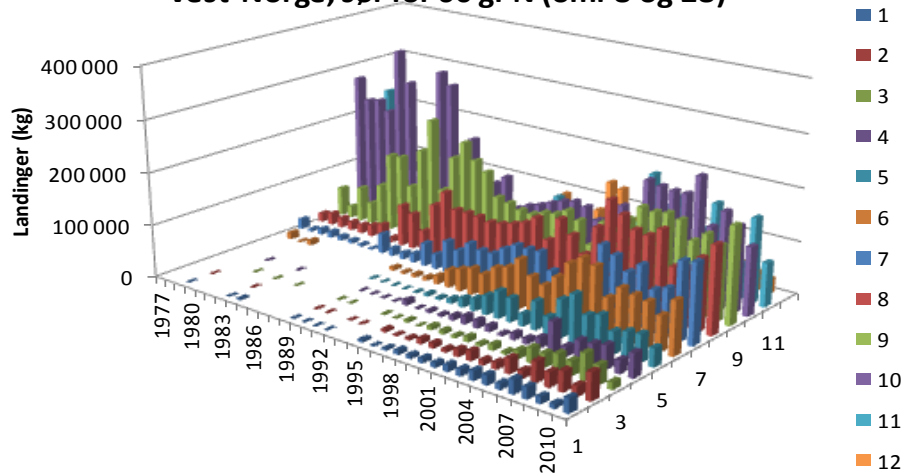
Landet fangst per statistisk lokasjon

(Data: Fiskeridirektoratet)

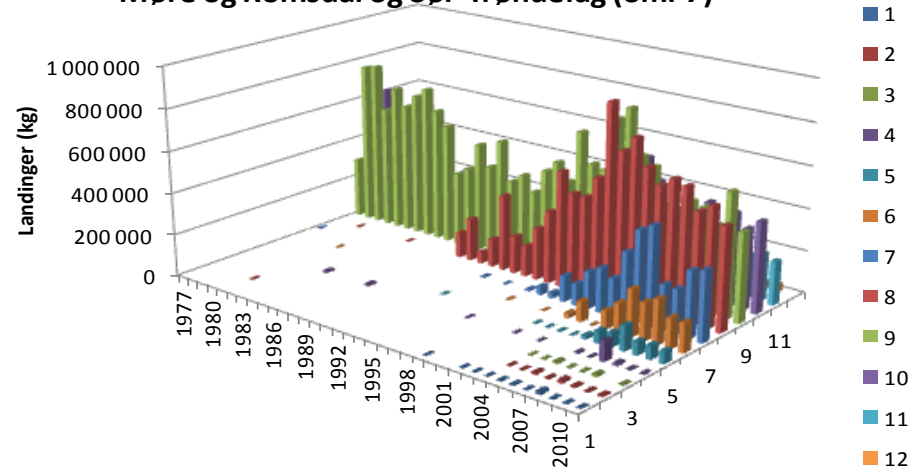


Landinger per år og måned

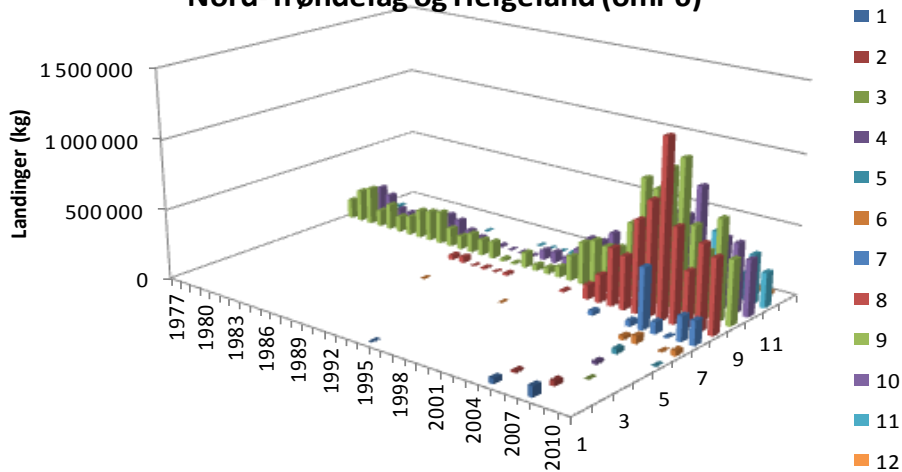
Vest-Norge, sør for 60 gr N (omr 8 og 28)



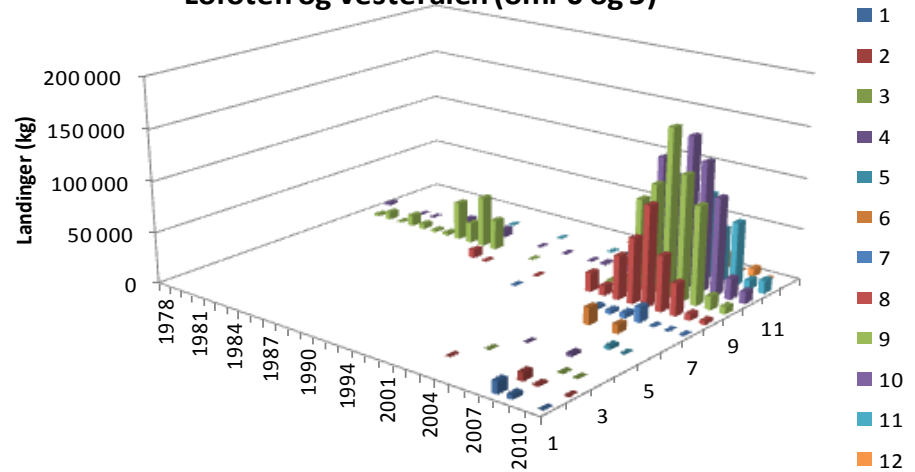
Møre og Romsdal og Sør-Trøndelag (omr 7)



Nord-Trøndelag og Helgeland (omr 6)

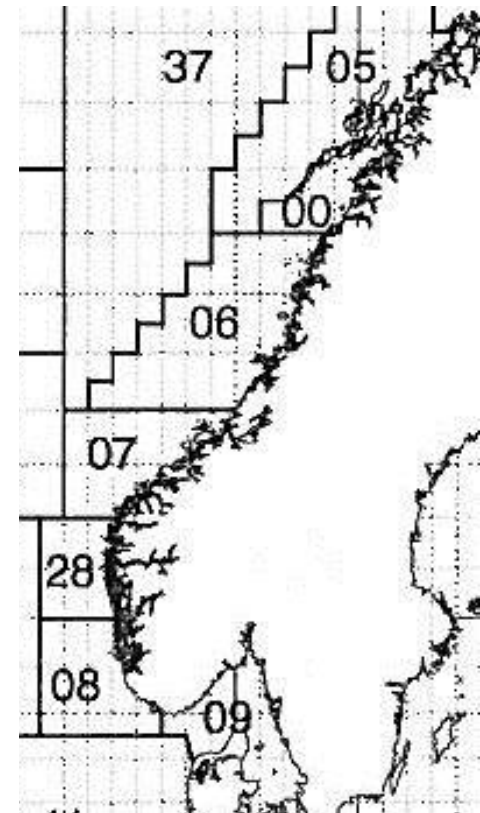


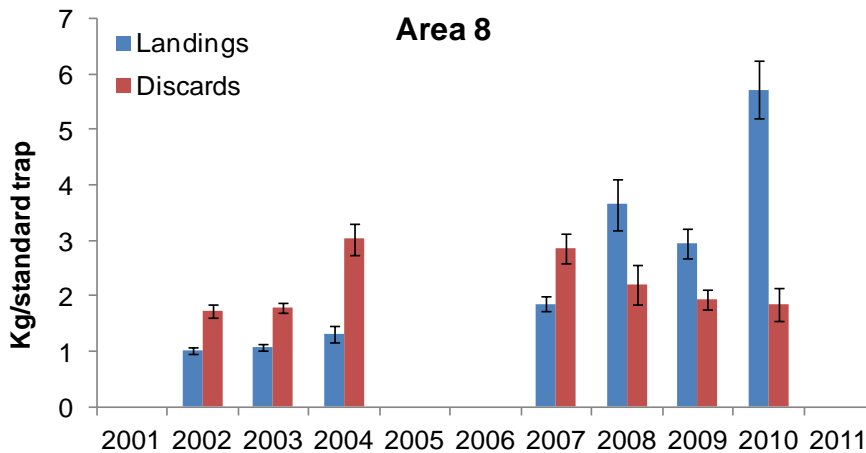
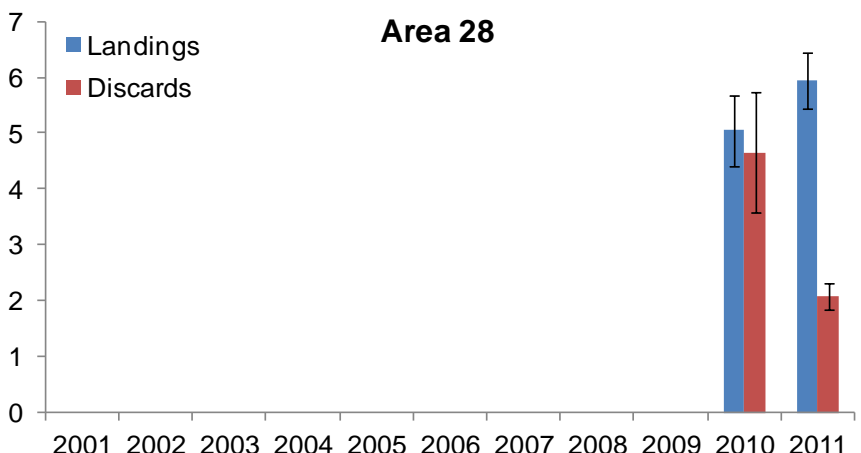
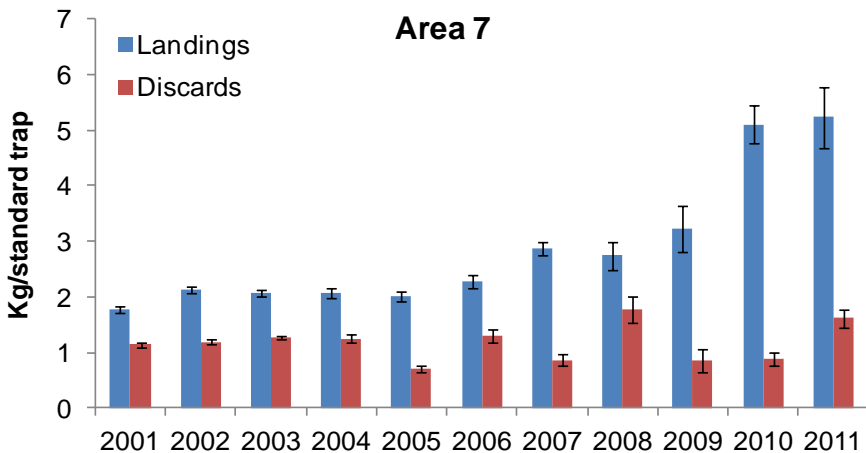
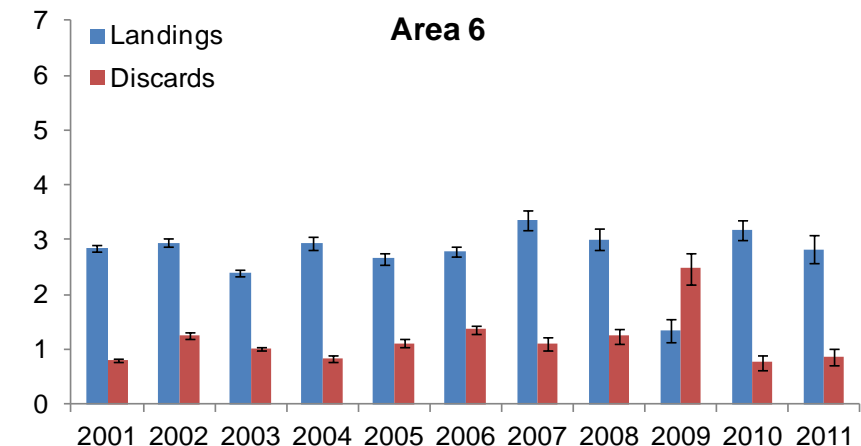
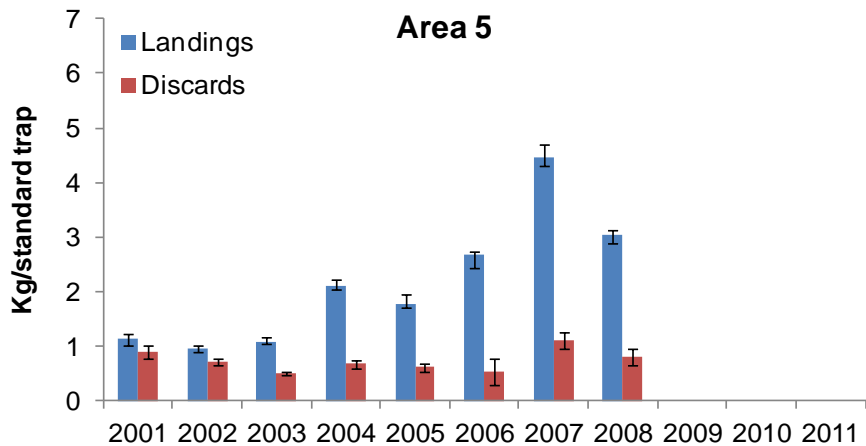
Lofoten og Vesterålen (omr 0 og 5)



Ressurskartleggingen

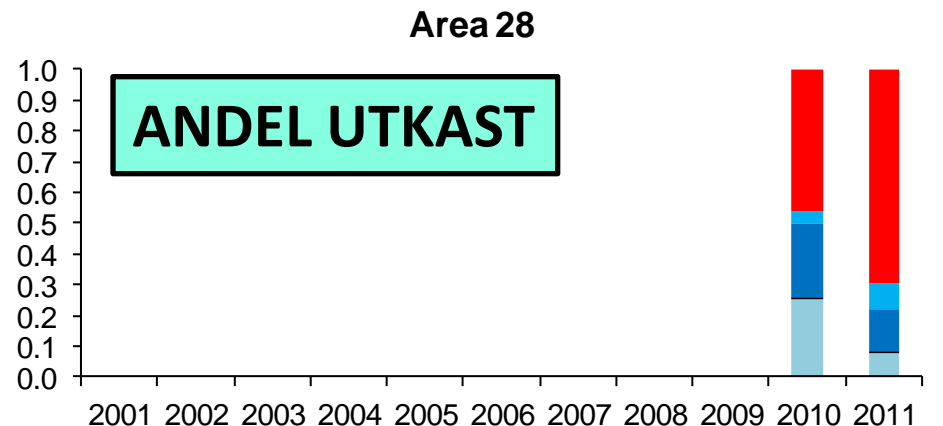
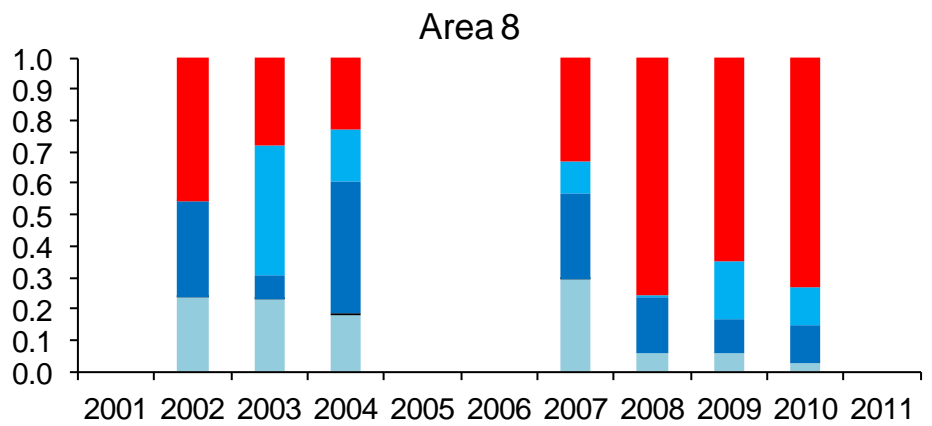
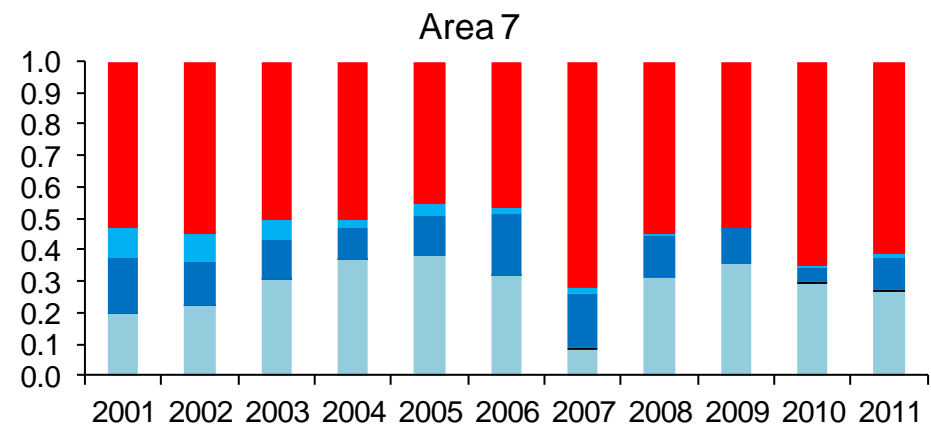
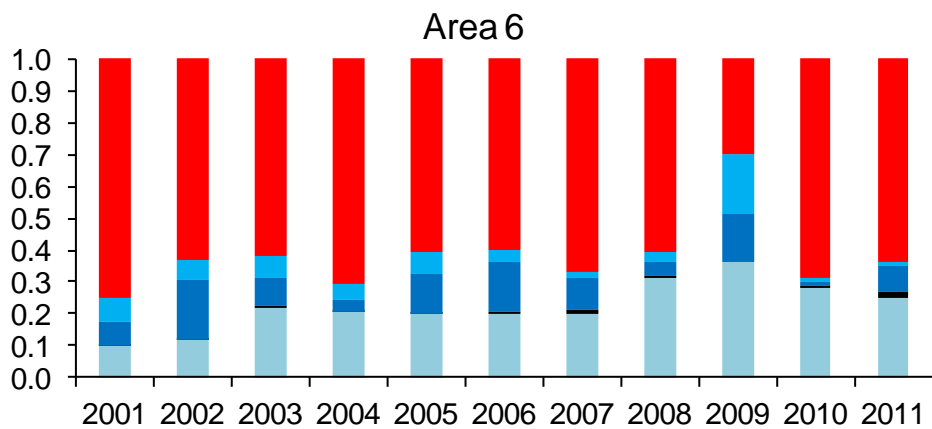
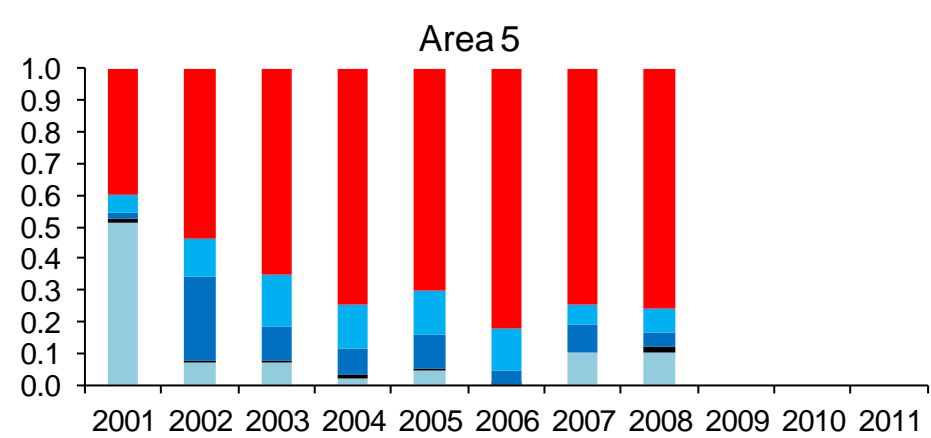
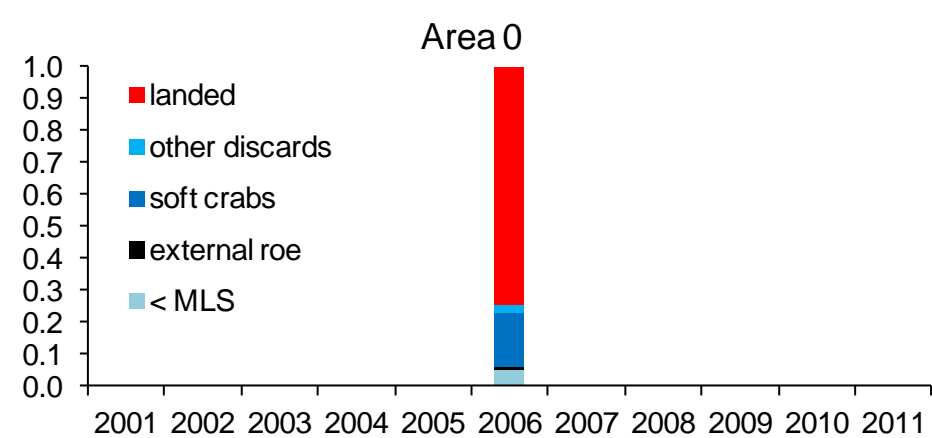
År	Statistisk område						Totalt # krabber	
	8	28	7	6	0	5		Totalt
2001			10	8		1	19	20 614
2002	4		9	9		3	25	29 831
2003	4		9	9		3	25	27 028
2004	3		6	9		1	19	7 875
2005			3	7		1	11	7 515
2006			4	8	2	1	15	5 169
2007	4		4	6		1	15	7 135
2008	1		2	4		1	8	3 778
2009	3		1	1			5	2 966
2010	2	2	3	3			10	4 769
2011		2	2	3			7	2 877

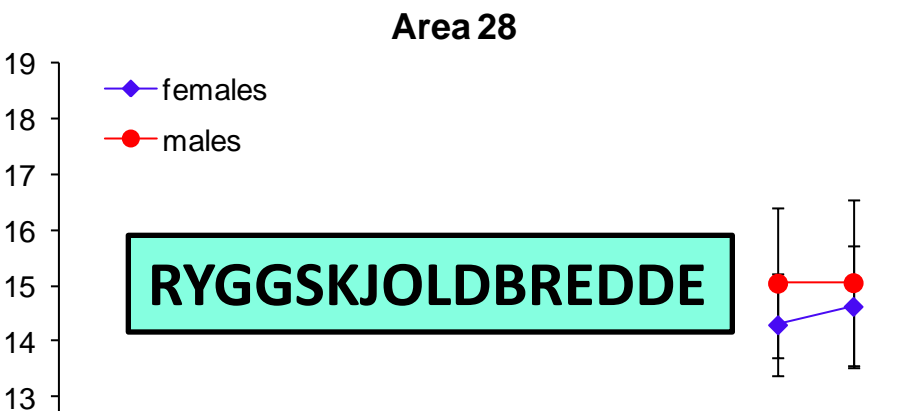
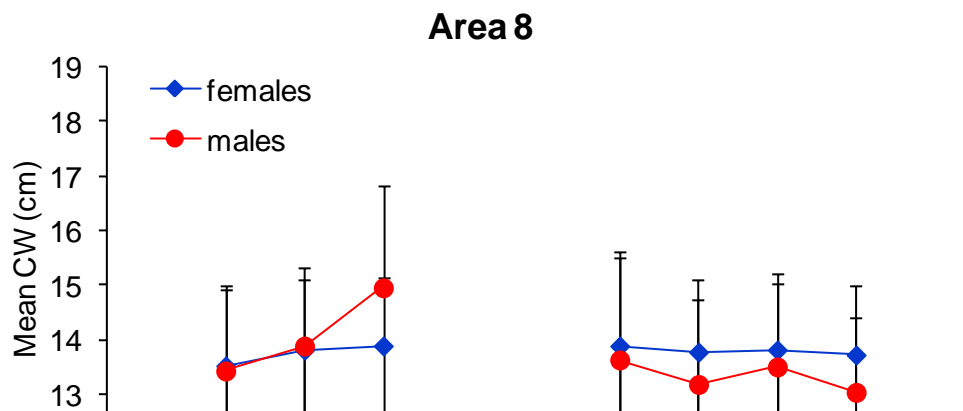
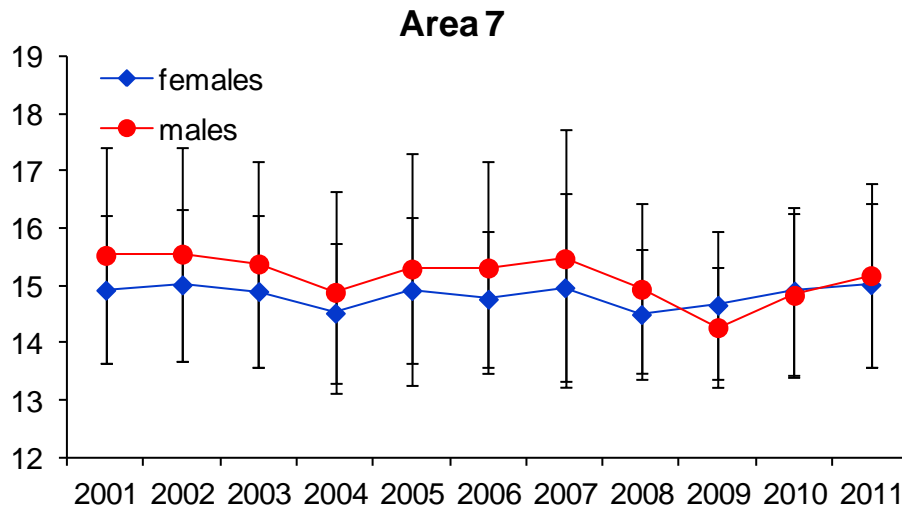
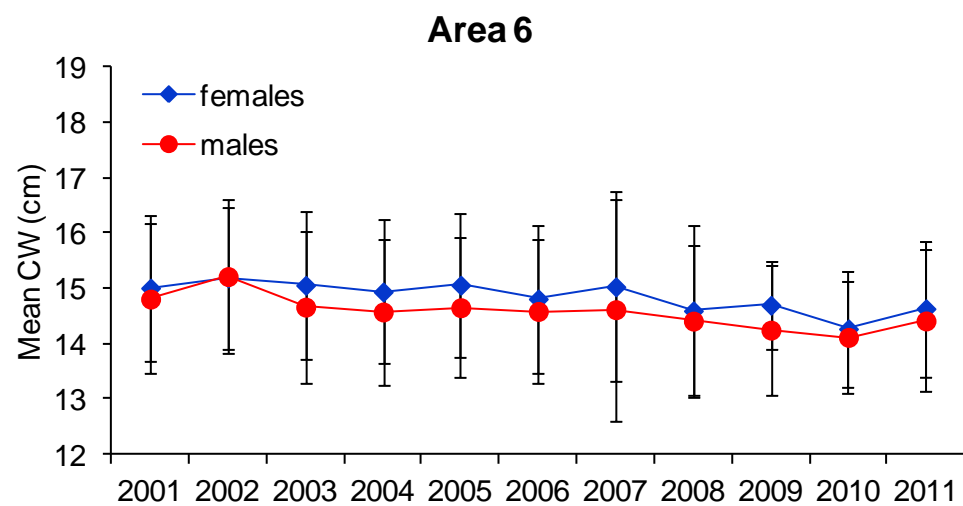
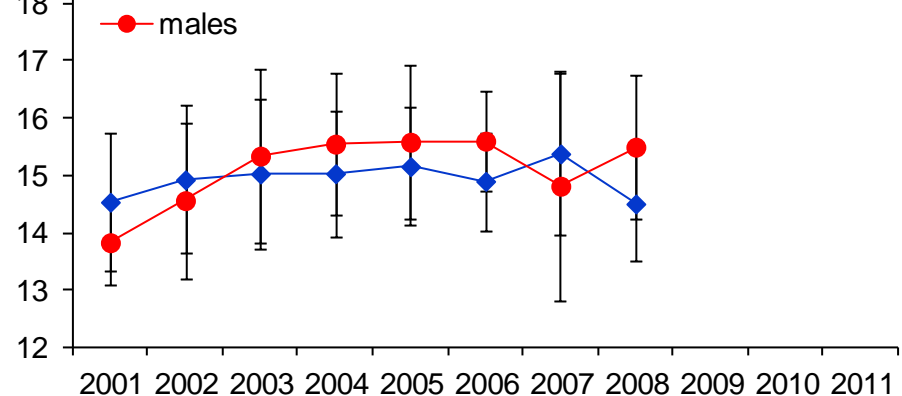
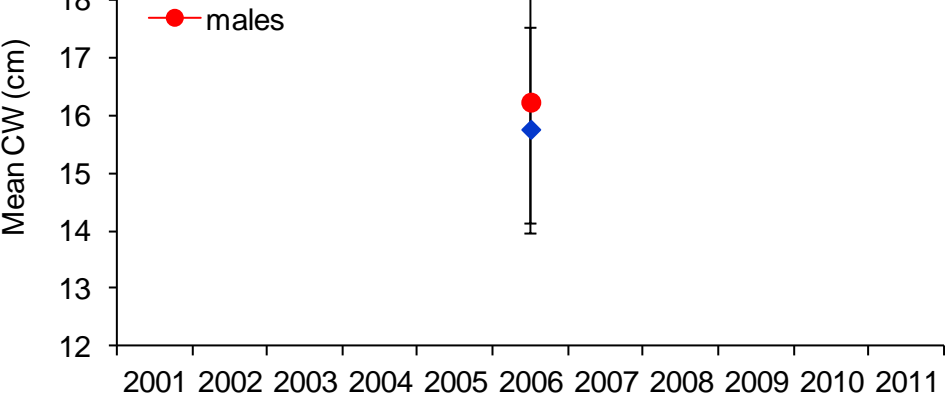




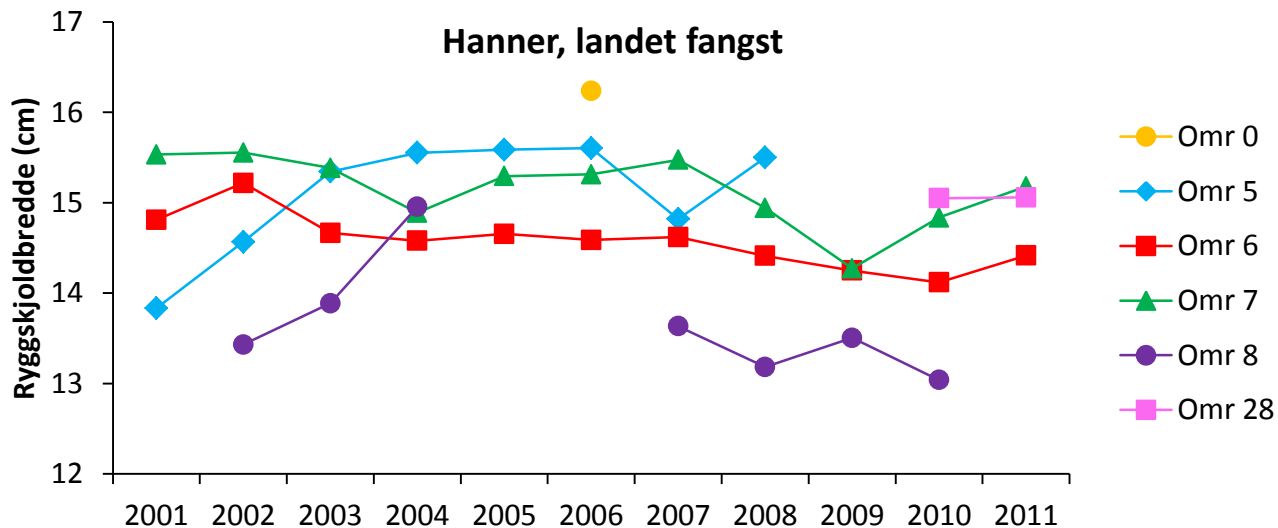
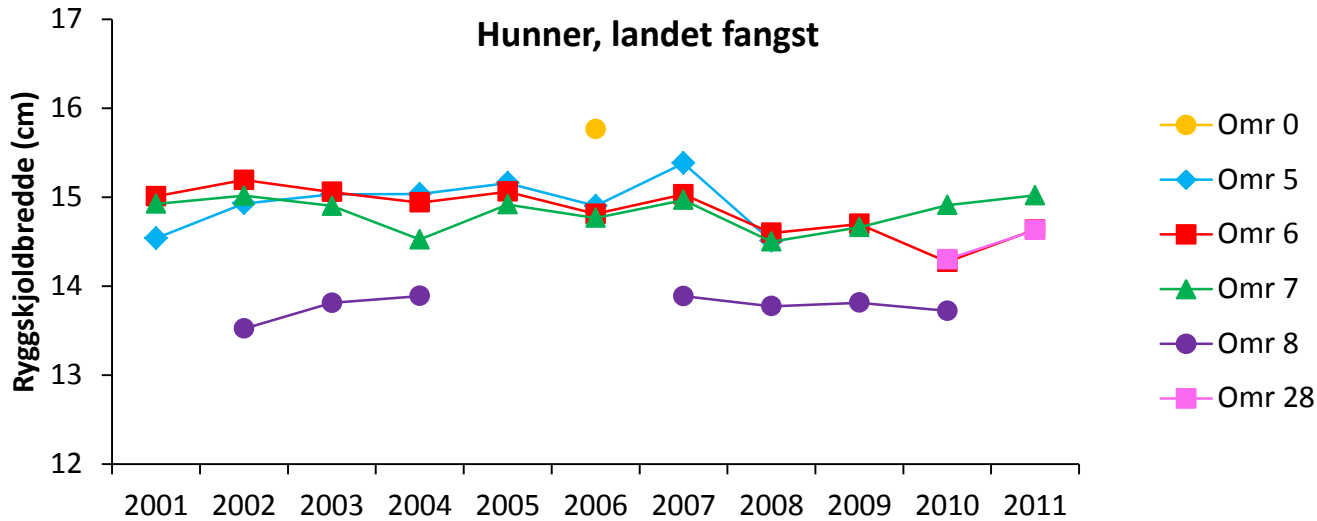
FANGST PER FORSØKSTEINE



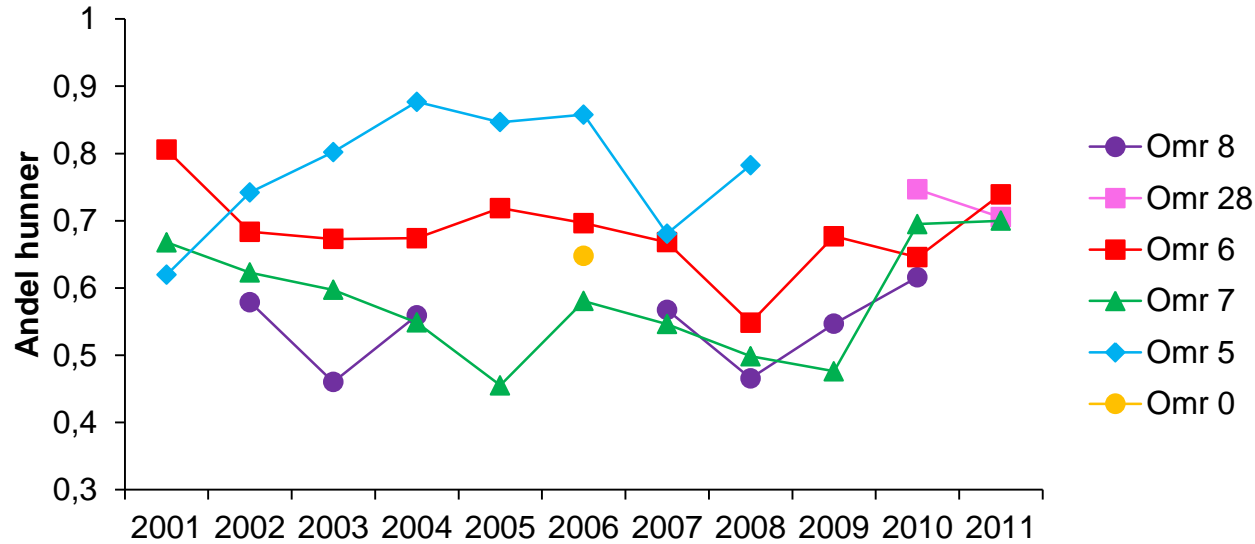




Ryggskjoldbredde, pr kjønn, område og år



Kjønnsratio



Andel hunner per måned og område

