

Article

Causes of Mortality and Loss of Lumpfish *Cyclopterus lumpus*

Patrick Reynolds ¹, Albert Kjartan Dagbjartarson Imsland ^{2,3,*} and Lauris Boissonnot ⁴¹ GIFAS AS, Gildeskål, 8140 Inndyr, Norway² Akvaplan-niva Iceland Office, Akralind 4, 201 Kopavogur, Iceland³ Department of Biological Sciences, University of Bergen, High Technology Centre, 5020 Bergen, Norway⁴ Aqua Kompetanse AS, 7770 Flatanger, Norway

* Correspondence: albert.imsland@uib.no

Abstract: Data from research and commercial use of lumpfish were collected from the research facilities of Gifas (Inndyr, Northern Norway, 67.0° N, 14.0° E). The data were sourced from 12 main lumpfish groups subdivided into 66 subgroups (N = 160,729) delivered to Gifas between 2013 and 2020 and used in cleaner-fish research in (a) land-based facilities, (b) small-scale, or (c) large-scale sea pens. The data were standardised and organised into three main headings. Firstly, background information included transfer time, point of origin, mean starting weight and population size on arrival. Other information included to which site the lumpfish were transferred, volume of cage/tank, whether in the presence of salmon or not, stocking density, days at each site and water quality parameters. Causes of mortality were recorded, when possible, for each group, along with calculated mortality rates, patterns, and analytical information, along with imaging where available. Results show that causes of mortality varied within and between research sites. For lumpfish in hatcheries as well as for those deployed at small-scale sea pens, the primary cause of mortality was identified as pathogenic, while for lumpfish deployed at large-scale sea pens, transporting, grading and mechanical delousing were the primary causes of mortality. The results indicate that more research is required to clarify best practices both in commercial hatcheries and salmon cages and further understanding on lumpfish biological requirements and stress physiology is necessary to develop better methods that safeguard lumpfish welfare and meet their needs.

Keywords: lumpfish; salmon farming; welfare; mechanical delousing; transport; pathogenic



Citation: Reynolds, P.; Imsland, A.K.D.; Boissonnot, L. Causes of Mortality and Loss of Lumpfish *Cyclopterus lumpus*. *Fishes* **2022**, *7*, 328. <https://doi.org/10.3390/fishes7060328>

Academic Editor: José Fernando López-Olmeda

Received: 18 October 2022

Accepted: 5 November 2022

Published: 10 November 2022

Publisher's Note: MDPI stays neutral with regard to jurisdictional claims in published maps and institutional affiliations.



Copyright: © 2022 by the authors. Licensee MDPI, Basel, Switzerland. This article is an open access article distributed under the terms and conditions of the Creative Commons Attribution (CC BY) license (<https://creativecommons.org/licenses/by/4.0/>).

1. Introduction

Lumpfish (*Cyclopterus lumpus*) have proven to be an effective lice eater at low sea temperatures [1–4]. However, high mortality and loss of cleaner-fish in salmon cages is one of the most serious problems the aquaculture industry in Norway faces at present. A study conducted by the Norwegian Food Safety Authority [5] revealed over 40% mortality of lumpfish deployed in Atlantic salmon net-pens in Norway. Results from the survey showed that farmers associate lumpfish mortalities with the occurrence of disease, but also handling and mechanical procedures, such as mechanical delousing. The study also found that lumpfish vaccination without anaesthesia is common practice, despite the lack of scientific studies showing any benefit of avoiding the use of anaesthesia during vaccination. This methodology can potentially contribute to events of extreme acute-stress responses that can often trigger other secondary issues [6]. Despite the common use of vaccination, the consensus among farmers was that existing vaccines were not effective and required further development. Findings based on additional assessments from the lumpfish and other cleaner-fish species used in Norwegian aquaculture are in accordance with the findings in [5], and [7,8] depict a grim scenario on lumpfish aquaculture, from hatcheries to Atlantic salmon farmers, where lumpfish welfare is questioned. The reports found a lack of standardized practices, inadequate feeding, lack of dedicated personnel to follow

up and constantly monitor health, and even lack of fundamental knowledge regarding species-specific needs [9].

The production methods for cultivation of lumpfish have been established [10] and are based on the technologies for rearing marine fin-fish such as sea bass and cod. Production of lumpfish has increased rapidly, and survival from hatch to stocking is high for a marine fin-fish species under hatchery conditions. There is the bonus that lumpfish grow quickly and can reach stocking size of 30 g within 6 to 8 months. However, there remain production, disease, vaccination, and quality issues. In many hatcheries, the suckers of the fish can be deformed and do not permit attachment to a substrate. These fish are unlikely to survive for long in sea pens, and even in the hatchery have to rest on the bottom of the tank, often on their side. These fish may be culled at an early stage. There may be genetic or nutritional causes for these abnormalities, but the condition needs to be fully investigated. In sum, there are various production-related issues that can contribute to the mortality of lumpfish in later stages and hence the need to look at underlying reasons for mortality and loss, as done in this study.

Worsening of lumpfish's welfare status has also been reported after transportation and deployment on sea pens, which can pose a significant stress. Conditions such as rapid cataract occurrence have also been demonstrated on deployed lumpfish, which is often associated with suboptimal feeds [11] or feeding protocols [12]

Although recent reports [5,7,8] highlighted the current grim situation, it was also pointed out that a significant part of the data were not included on the studies, as the reported data lacked coherency and method. This emphasizes the urgent need for standardization of methodology, such as in health monitoring, and the great potential for improving welfare by adopting strategies that safeguard lumpfish welfare. Continuous health and welfare monitoring are essential to help identify when and what procedures and operations are detrimental and thus adapt and improve practices [13,14]. To encourage the adoption of health status monitoring in a standardized, more comparable way, practical and user-friendly approaches are necessary. Recently, operational welfare indicators for lumpfish [15,16] have been published that can be used to define best-practice guides for better welfare and reduced mortality. For several years, Gifas in collaboration with Akvaplan-niva has conducted several large-scale and small-scale studies [1–4,10–12,15,17–23]. In these experiments, the focus has been on grazing effect, but information on mortality and loss has also been systematically gathered, which is presented in this study.

The main objective of the current study was to map the actual causes of mortality and loss of lumpfish fish, both in the hatchery phase and in the sea phase.

2. Materials and Methods

2.1. Lumpfish Research Sites and Data Mining

Data from research and commercial use of lumpfish were collected from all Gifas facilities where this species was utilised. The facilities were identified as (A) land-based (MH), (B) small-scale Langholmen (LH), and commercial farm sites (Røssøy, Leirvika Nord, and Halstenhamn (SS)). Data were sourced from 12 main lumpfish groups subdivided into 66 subgroups (N = 160,729, Table 1) that were delivered to Gifas between 2013 and 2020. The number of lumpfish transferred to each facility was N = 400 for MH (4 subgroups), N = 1768 for LH (39 subgroups) and N = 158,564 for SS (23 subgroups).

The data were standardised and organised into three main headings. Firstly, background information included transfer time, point of origin, mean starting weight and population size on arrival. Other information included to which site the lumpfish were transferred, volume of cage/tank, whether in the presence of salmon or not, stocking density, days at each site, and water quality parameters. Causes of mortality were recorded, when possible, for each group, along with calculated mortality rates, patterns, and analytical information if available, along with imaging where available.

Table 1. Background information on lumpfish transferred to Gifas facilities in 2013–2020 and analysed for mortality and losses in this study.

CODE	No. Code	Origin	Transfer		Transfer Method	Start Weigh (g)	Number of Cages	Diet Hatchery	Diet		Population (N)	Site	Volume m ³	with Salmon	Salmon Weight	SD	Days at Site	Water Quality		
			Month	Year					Pre- Transfer	Post-Transfer								Temp	DO	
MH1	MH1	W	AC Lofoten	May	2018	road	151.4	3	?	Biomar	Amber Nep	90	MH	2.5	N	-	68	7.3	92.5	
	MH2	W	AC Lofoten	May	2018	road	153.8	3		Biomar	Amber Nep	90	MH	2.5	N		68	7.3	92.5	
MH2	MH3	W	ASG	Jan	2020	road	32.8	2	Otohime	Skretting	Skretting	110	MH	2.5	N		61	6.5	90.0	
	MH4	W	ASG	Jan	2020	road	32.3	2	Otohime	Skretting	Biomar	110	MH	2.5	N		61	6.5	90.0	
LH1	LH1	W	AC Lofoten	Jan	2015	road	22.6	2	?	?	Amber Nep.	34	LH	125	Y	538.2	10.0	159	6.4	91.2
	LH2	W	AC Lofoten	Jan	2015	road	77.4	2	?	?	Amber Nep.	30	LH	125	Y	516.3	10.0	159	6.4	91.2
	LH3	W	AC Lofoten	Jan	2015	road	113.5	2	?	?	Amber Nep.	30	LH	125	Y	546.0	10.0	159	6.4	91.2
LH2	LH4	W	Trond	May	2013	road	42.1	2	?	?	Amber Nep.	36	LH	125	Y	298.4	12.5	75	9.7	88.7
	LH5	W	Trond	May	2013	road	80.1	2	?	?	Amber Nep.	36	LH	125	Y	297.8	12.5	75	9.7	88.7
	LH6	W	Trond	May	2013	road	144.5	2	?	?	Amber Nep.	36	LH	125	Y	287.6	12.5	75	9.7	88.7
LH3	LH7	W	Tromso	May	2016	road	122.1	2	?	Amber Nep.	Amber Nep.	60	LH	125	Y	653.7	10.0	62	9.1	93.5
	LH8	W	Tromso	May	2016	road	113.2	2	?	Amber Nep.	Amber Nep.	60	LH	125	Y	656.0	10.0	62	9.1	93.5
LH4	LH9	W	Tromso	May	2015	road	186.0	2	Artemia/Gemma	Gemma	Amber Nep.	43	LH	125	Y	123.1	10.0	78	9.1	94.2
	LH10	W	Tromso	May	2015	road	122.6	2	Artemia/Gemma	Gemma	Amber Nep.	43	LH	125	Y	123.8	10.0	78	9.1	94.2
	LH11	W	Tromso	May	2015	road	178.7	2	Artemia/Gemma	Gemma	Amber Nep.	43	LH	125	Y	120.1	10.0	78	9.1	94.2
	LH12	W	Tromso	May	2015	road	152.0	2	Artemia/Gemma	Gemma	Amber Nep.	43	LH	125	Y	121.6	10.0	78	9.1	94.2
	LH13	W	Tromso	May	2015	road	223.3	2	Artemia/Gemma	Gemma	Amber Nep.	43	LH	125	Y	122.8	10.0	78	9.1	94.2
	LH14	W	Tromso	May	2015	road	157.8	2	Artemia/Gemma	Gemma	Amber Nep.	43	LH	125	Y	123.4	10.0	78	9.1	94.2
	LH15	W	Tromso	May	2015	road	149.2	2	Artemia/Gemma	Gemma	Amber Nep.	43	LH	125	Y	123.7	10.0	78	9.1	94.2
	LH16	W	Tromso	May	2015	road	184.7	2	Artemia/Gemma	Gemma	Amber Nep.	43	LH	125	Y	123.0	10.0	78	9.1	94.2
LH5	LH17	W	Tromso	May	2015	road	171.0	2	Artemia/Gemma	Gemma	Amber Nep.	43	LH	125	Y	124.5	10.0	78	9.1	94.2
	LH18	W	Tromso	Sept	2018	road	39.8	2	Gemma	Gemma	feed blocks	48	LH	125	Y	394.2	10.0	73	8.4	84.9
	LH19	W	Tromso	Sept	2018	road	49.3	2	Gemma	Gemma	feed blocks	48	LH	125	Y	387.7	10.0	73	8.4	84.9

Table 1. Cont.

CODE	No. Code	Origin	Transfer		Transfer Method	Start Weigh (g)	Number of Cages	Hatchery	Diet		Populat- ion (N)	Site	Volume m ³	with Salmon	Salmon Weight	SD	Days at Site	Water Quality		
			Month	Year					Pre- Transfer	Post-Transfer								Temp	DO	
LH6	LH20	W/F	Tromso	Oct	2019	road	55.3	2	Gemma	Gemma	feed blocks	48	LH	125	Y	642.4	10.0	69	7.9	89.4
	LH21	W/F	Tromso	Oct	2019	road	39.2	2	Gemma	Gemma	feed blocks	48	LH	125	Y	624.6	10.0	69	7.9	89.4
	LH22	W/F	Tromso	Oct	2019	road	56.9	2	Gemma	Gemma	feed blocks	48	LH	125	Y	627.7	10.0	69	7.9	89.4
	LH23	W/F	Tromso	Oct	2019	road	69.3	2	Gemma	Gemma	feed blocks	48	LH	125	Y	611.3	10.0	69	7.9	89.4
	LH24	W/F	Tromso	Oct	2019	road	56.4	2	Gemma	Gemma	feed blocks	48	LH	125	Y	618.2	10.0	69	7.9	89.4
	LH25	W/F	Tromso	Oct	2019	road	44.4	2	Gemma	Gemma	feed blocks	48	LH	125	Y	614.6	10.0	69	7.9	89.4
	LH26	W/F	Tromso	Oct	2019	road	67.1	2	Gemma	Gemma	feed blocks	48	LH	125	Y	615.9	10.0	69	7.9	89.4
	LH27	W/F	Tromso	Oct	2019	road	55.4	2	Gemma	Gemma	feed blocks	48	LH	125	Y	626.3	10.0	69	7.9	89.4
	LH28	W/F	Tromso	Oct	2019	road	56.8	2	Gemma	Gemma	feed blocks	48	LH	125	Y	618.6	10.0	69	7.9	89.4
	LH29	W/F	Tromso	Oct	2019	road	46.9	2	Gemma	Gemma	feed blocks	48	LH	125	Y	614.3	10.0	69	7.9	89.4
LH7	LH30	W/F	Tromso	Jul	2020	road	35.4	2	Gemma	Gemma	feed blocks	48	LH	125	Y	291.3	10.0	77	12.9	89.5
	LH31	W/F	Tromso	Jul	2020	road	40.5	2	Gemma	Gemma	feed blocks	48	LH	125	Y	309.4	10.0	77	12.9	89.5
	LH32	W/F	Tromso	Jul	2020	road	39.7	2	Gemma	Gemma	feed blocks	48	LH	125	Y	284.4	10.0	77	12.9	89.5
	LH33	W/F	Tromso	Jul	2020	road	47.7	2	Gemma	Gemma	feed blocks	48	LH	125	Y	278.4	10.0	77	12.9	89.5
	LH34	W/F	Tromso	Jul	2020	road	38.0	2	Gemma	Gemma	feed blocks	48	LH	125	Y	286.1	10.0	77	12.9	89.5
	LH35	W/F	Tromso	Jul	2020	road	42.8	2	Gemma	Gemma	feed blocks	48	LH	125	Y	259.6	10.0	77	12.9	89.5
	LH36	W/F	Tromso	Jul	2020	road	48.9	2	Gemma	Gemma	feed blocks	48	LH	125	Y	271.6	10.0	77	12.9	89.5
	LH37	W/F	Tromso	Jul	2020	road	47.3	2	Gemma	Gemma	feed blocks	48	LH	125	Y	267.6	10.0	77	12.9	89.5
	LH38	W/F	Tromso	Jul	2020	road	40.3	2	Gemma	Gemma	feed blocks	48	LH	125	Y	263.6	10.0	77	12.9	89.5
	LH39	W/F	Tromso	Jul	2020	road	39.6	2	Gemma	Gemma	feed blocks	48	LH	125	Y	259.6	10.0	77	12.9	89.5
SS8	SS1	W	ASG	Feb	2019	WB	70.1	1	?	Skretting	feed blocks	14074	RØSS	140M PC	Y	533.4	8.0	10	4.9	93.2
	SS2	W	ASG	Feb	2019	WB	69.5	1	?	Skretting	Skretting	13977	RØSS	140M PC	Y	499.5	8.0	10	4.9	93.2
	SS3	W	ASG	Feb	2019	WB	72.8	1	?	Skretting	feed blocks	13985	RØSS	140M PC	Y	556.2	8.0	10	4.9	93.2
	SS4	W	ASG	Feb	2019	WB	73.4	1	?	Skretting	Skretting	11842	RØSS	140M PC	Y	453.8	8.0	10	4.9	93.2
SS9	SS5	W	ASG	Sep	2018	WB	52.2	1	Gemma	Skretting	feed blocks	3800	LEIRV	90M PC	Y	1966.7	8.0	181	9.1	93.7
	SS6	W	ASG	Sep	2018	WB	55.8	1	Gemma	Skretting	feed blocks	3800	LEIRV	90M PC	Y	1941.2	8.0	181	9.1	93.7
	SS7	W	ASG	Sep	2018	WB	56.1	1	Gemma	Skretting	feed blocks	3800	LEIRV	90M PC	Y	1726.5	8.0	181	9.1	93.7
	SS8	W	ASG	Sep	2018	WB	49.5	1	Gemma	Skretting	feed blocks	3800	LEIRV	90M PC	Y	1873.5	8.0	181	9.1	93.7
	SS9	W	ASG	Sep	2018	WB	52.6	1	Gemma	Skretting	Skretting	3800	LEIRV	90M PC	Y	1487.5	8.0	181	9.1	93.7
	SS10	W	ASG	Sep	2018	WB	49.9	1	Gemma	Skretting	Skretting	3800	LEIRV	90M PC	Y	1938.4	8.0	181	9.1	93.7
	SS11	W	ASG	Sep	2018	WB	58.5	1	Gemma	Skretting	Skretting	3800	LEIRV	90M PC	Y	1445.9	8.0	181	9.1	93.7
	SS12	W	ASG	Sep	2018	WB	53.5	1	Gemma	Skretting	Skretting	3800	LEIRV	90M PC	Y	1771.0	8.0	181	9.1	93.7
	SS13	W	ASG	Sep	2018	WB	51.4	1	Gemma	Skretting	Skretting	3800	LEIRV	90M PC	Y	1706.4	8.0	181	9.1	93.7
	SS14	W	ASG	Sep	2018	WB	52.2	1	Gemma	Skretting	Skretting	3800	LEIRV	90M PC	Y	1660.7	8.0	181	9.1	93.7
	SS15	W	ASG	Sep	2018	WB	54.7	1	Gemma	Skretting	Skretting	3800	LEIRV	90M PC	Y	1542.4	8.0	181	9.1	93.7
	SS16	W	ASG	Sep	2018	WB	60.1	1	Gemma	Skretting	Skretting	3800	LEIRV	90M PC	Y	1665.5	8.0	181	9.1	93.7
	SS17	W	ASG	Sep	2018	WB	49.5	1	Gemma	Skretting	Skretting	3800	LEIRV	90M PC	Y	1437.3	8.0	181	9.1	93.7

Table 1. Cont.

CODE	No. Code	Origin		Transfer		Start Weigh (g)	Number of Cages	Hatchery	Diet		Populat- ion (N)	Site	Volume m ³	with Salmon	Salmon Weight	SD	Days at Site	Water Quality		
				Month	Year				Method	Pre- Transfer								Post-Transfer	Temp	DO
SS10	SS18	W	ASG	Aug	2019	WB	52.5	1	Gemma	Skretting	feed blocks	7965	HALST	140M PC	Y	808.3	8.0	272	7.4	92.8
	SS19	W	ASG	Aug	2019	WB	50.1	1	Gemma	Skretting	feed blocks	10775	HALST	140M PC	Y	755.5	8.0	272	7.4	92.8
	SS20	W	ASG	Aug	2019	WB	56.8	1	Gemma	Skretting	feed blocks	7876	HALST	140M PC	Y	268.7	8.0	272	7.4	92.8
	SS21	W	ASG	Aug	2019	WB	52.7	1	Gemma	Skretting	Skretting	7766	HALST	140M PC	Y	564.9	8.0	272	7.4	92.8
	SS22	W	ASG	Aug	2019	WB	53.6	1	Gemma	Skretting	Skretting	7823	HALST	140M PC	Y	696.9	8.0	272	7.4	92.8
	SS23	W	ASG	Aug	2019	WB	55.7	1	Gemma	Skretting	Skretting	13081	HALST	140M PC	Y	168.1	8.0	272	7.4	92.8

Abbreviations: Origin: W = wild; W/F = first generation domesticated; Transport: Road = transport by truck on land; WB = transport by well-boat; Site: MH = land based; LH = small sea pens; RØSS, LEIRV, HALST = large-scale sea pens.

2.2. Background Information

Of the 66 subgroups analysed in the study, 46 were derived from wild broodstock and 20 were derived from farmed and wild broodstock that were part of an ongoing breeding programme on lumpfish. All background information recorded for each group is summarised in Table 1. Lumpfish groups were transferred from four main suppliers between 2013 and 2020. All groups transferred to land-based and small-scale facilities were transferred by road whilst all lumpfish transferred to Gifas commercial farm sites were transferred by well-boat. All groups transferred to sea were stocked with Atlantic salmon.

All four groups of lumpfish were transferred to MH (land-based) during January and February whilst for lumpfish groups transferred to LH (small-scale), three were transferred in January and 14 and 10 groups were transferred during May and July, respectively. Of the remaining groups, 2 were transferred during September and 10 during October. The majority of lumpfish transferred to SS (commercial cage sites) occurred during the month of September (13) whilst 4 and 6 groups were transferred during February and August, respectively.

Of the four subgroups transferred to MH, mean weights ranged between 32.3 g and 153.8 g. Lumpfish subgroups transferred to LH ranged between 35.5 g and 223.3 g whilst subgroups transferred to SS ranged between 49.5 g and 73.4 g.

The two main lumpfish groups transferred to MH remained on site for 68 and 61 days respectively, while the seven main groups transferred to LH remained on site between 62 and 159 days. The three main groups transferred to SS were maintained on site between 63 and 272 days.

2.3. Health Assessment of Lumpfish

Assessment of the health status of 37 of the lumpfish subgroups was undertaken during routine sampling points using the Gifas Lumpfish Health Scoring System (LHSS, Table 2). The health scoring system focused on morphological health indicators for lumpfish. It is divided in several categories, where each is evaluated and scored accordingly by the user (Table 2). The assessment of health status was non-destructive, and lumpfish were returned to their specific cage after assessment. Each category has a specific “weight” in the final consideration of the overall health score. The specific attribution of an added “weight” for each category was decided and adjusted after appropriate testing with historical health data sets. The weighting criteria also consider some deteriorating conditions more severe than others and accordingly more weighting is applied in these instances. The input of score values in each category was calculated, giving a weighted health score for each fish.

The average group health score was calculated and an action highlighted based on the score (Table 2). If scores were between 0 and 3, health status was deemed satisfactory, and no action was required. A score of between 3 and 5 indicated health status had deteriorated and action was required. A score of over 5 indicated extensive health deterioration and immediate action required to alleviate suffering. In addition to the external condition of the lumpfish, evidence of any continual individual loss of growth and/or mortality rates was assessed. Condition was assessed using regression analysis for estimation of length and weight parameters. The relationship between weight (W) and length (L) in fishes has the form:

$$W = aL^b$$

The shape parameter b was calculated using historical weight, length, width, and height data from lumpfish ($N = 3657$). The results were used as part of the welfare scoring system utilised in this study.

All lumpfish deployed at Gifas facilities are routinely assessed for health status as mentioned above, which is based on external morphological examination. The system allows for further assessment if lumpfish appear distressed and/or mortalities are recorded. Fish are sampled for analysis of internal parameters that may be directly related to the cause of death/distress. These parameters include such assessments as liver colour, ascites, and abnormalities to internal organs, including signs of pathogenic presence. A range of

tissue types are sampled and extensively analysed using the appropriate methods, which include PCR, histology, bacteriology, and blood sampling.

Table 2. Lumpfish Health Scoring System (LHSS) utilized in this study.

Individual Scoring Guide						
Fin Condition	Erosion/Splitting	No visible damage	Less than 25% of the fin eroded—minor splitting	Between 25 and 50% of erosion	More than 50% erosion	
Skin	Body lesions/Wounds/Inflammation	Intact	Minor injury/light inflammation	Increased localized damage	Open wounds/haemorrhaging	
Malformations	Suction disc Spine	Normal	Functional—light deformity	Functional—Obvious malformation	Non-functional—Severe deformity	
Cataracts	Size	No cataract	0–10% of the eye	10–40% of the eye	40–70% of the eye	Over 70% of the eye
	Opacity		Translucent	Opaque- Whitish crystalline	Totally opaque, loss of translucency	
Eye damage	Lesions/Ulcers/Swelling	No visible damage	0–25% of the eye	25–50% of the eye	50–75% of the eye	Over 75% of the eye
Fitness	Nutritional fitness	Optimal predicted weight	15% to 25% below or 25% to 35% above optimal predicted weight	25% to 50% below or 35% above optimal predicted weight	More than 50% below optimal predicted weight	
		0	1	2	3	4
Group Evaluation and Action Guide						
Health score	Evaluation			Action		
0–3	No to minimal health deterioration			No action required		
3–5	Signs of health deterioration			Measurements to improve health. Potential sampling to determine causes of health deterioration.		
+5	Compromised welfare			Consider removal of fish. Approved veterinary should be contacted. Potential additional samples to determine causes of such health deterioration.		

2.4. Statistical Methods

All statistical analyses were conducted using Statistica™ 12.0 software. Possible differences in mortality data were tested for each group with one-way analysis of variance (ANOVA). Significant differences revealed in ANOVA were followed by Tukey’s multiple range tests to determine differences among experimental groups. A significance level (α) of 0.05 was used if not stated otherwise. The cumulative percentage mortality data sets were subjected to linear regression analysis ($\alpha = 0.05$). In all regressions, cumulative mortality data were the independent variable (X-axis) and respective response criteria was the dependent (Y) variable. Linear regression was also tested for significant deviation of the slope from zero (p -value, <0.05).

3. Results

3.1. Causes of Mortality

There were nine known primary causes of mortality identified for all groups from the three locations, and mortalities with no proven cause were classified as unknown (Figure 1). The most frequent causes were handling/grading (21.2%), mechanical delousing (19.7%), and bacterial infections (16.7%), and 19.7% had no known cause. Mortality during transfer accounted for 6.1%, while 4.5% was linked to parasitic agents. Both viral infections and severe cataracts accounted for 3% of groups, and 1.5% was linked to dietary effects.

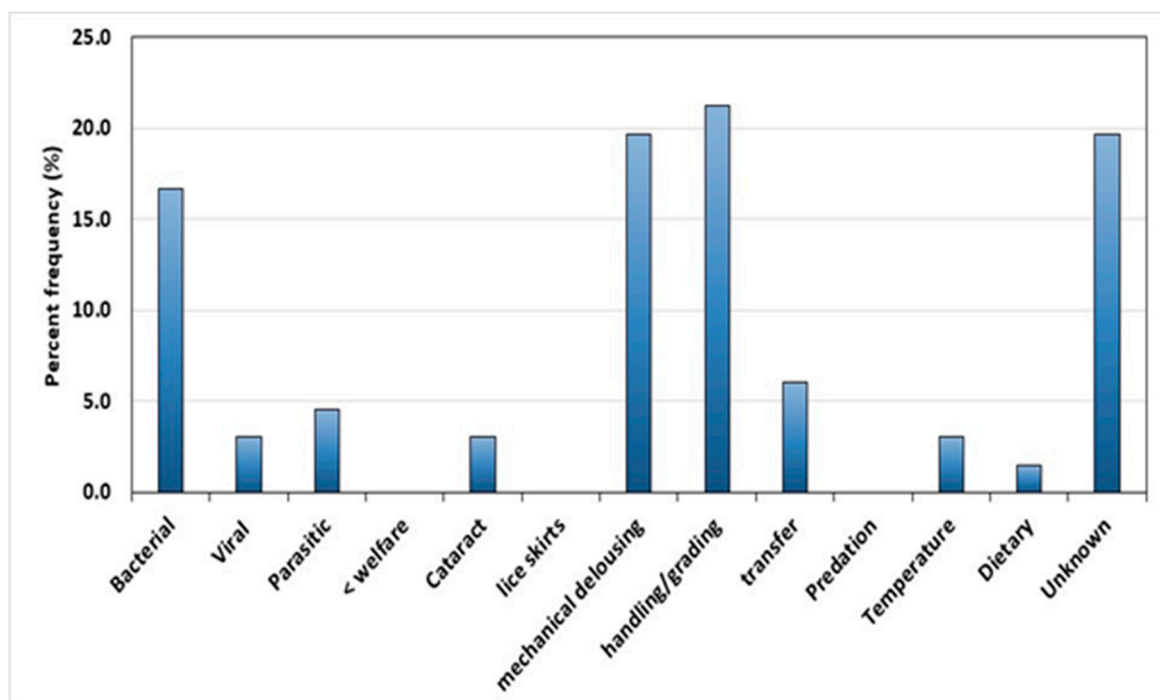


Figure 1. Percentage of primary causes of mortality identified for all lumpfish groups.

For each facility (Table 1), of the four groups transferred to MH, two (50%) had occurrences of mortality associated with bacterial infection whilst one group (25%) had mortalities linked to dietary effects. Of the 39 groups exhibiting mortality transferred to LH, bacterial agents were identified as the primary cause for nine of the groups (23.1%) whilst viral agents were responsible for mortalities in two of the groups (5.1%). Gill parasites were the primary cause of mortality in three groups (7.7%) whilst severe incidence of cataracts was accountable in two of the groups. Handling was identified as the primary cause of mortality for eight of the groups whilst temperature gradients were identified as the main causal agent for two groups. Thirteen groups (33.3%) had mortalities where no primary agent could be identified (Table 3). Of the 23 groups of lumpfish transferred to SS, 13 (56.5%) had mortalities where mechanical delousing was identified as the most likely primary cause, whilst grading and splitting of Atlantic salmon was the primary cause of mortality in six (26.1%) groups. Transporting lumpfish from the hatchery to sea cages accounted for mortality in four groups (Table 3).

Table 3. Number and percentage of primary causes of mortality recorded at each location.

Causes	Land-Based (MH)		Small-Scale (LH)		Commercial (SS)	
	Number	Percentage	Number	Percentage	Number	Percentage
Bacterial.	2	50.0	9	23.1	-	-
Viral	-	-	2	5.1	-	-
Parasite	-	-	3	7.7	-	-
<Welfare	-	-	-	-	-	-
Cataract	-	-	2	5.1	-	-
Mechanical delousing	-	-	-	-	13	56.5
Grading/handling	-	-	8	20.5	6	26.1
Transporting	-	-	-	-	4	17.4
Predation	-	-	-	-	-	-
Temperature	-	-	2	5.1	-	-
Dietary	1	25.0	-	-	-	-
Unknown	-	-	13	33.3	-	-

There were 11 known primary and secondary causes of mortality identified for all groups from the three locations, and mortality with no proven cause was classified as unknown (Table 4). There were no secondary causes of mortality associated with any of the four groups transferred to MH (Table 4), while secondary causes of mortality of lumpfish transferred to LH were associated with handling, transporting, and unknown factors (Table 4). Secondary causes of mortalities of lumpfish transferred to SS were identified as being associated with bacterial infections, reduced welfare, grading, predation by birds, and unknown factors (Table 4).

Table 4. Number and percentage of primary and secondary causes of mortality recorded at each location. Number and percentage of secondary causes are in red with parenthesis.

Causes	Land-Based (MH)		Small-Scale (LH)		Commercial (SS)	
	Number	Percentage	Number	Percentage	Number	Percentage
Bacterial.	2	50.0	9	23.1	0 (4)	0 (17.4)
Viral	-	-	2	5.1	-	-
Parasite	-	-	3	7.7	-	-
<Welfare	-	-	-	-	0 (19)	0 (82.6)
Cataract	-	-	2	5.1	-	-
Mechanical delousing	-	-	-	-	13	56.5
Grading/handling	-	-	8 (1)	20.5 (2.6)	6 (6)	26.1 (26.1)
Transporting	-	-	0 (2)	0 (5.1)	4	17.4
Predation	-	-	-	-	0 (19)	0 (82.6)
Temperature	-	-	2	5.1	-	-
Dietary	1	25.0	-	-	-	-
Unknown	-	-	13 (1)	33.3 (2.6)	0 (16)	0 (69.6)

3.2. Mortality Patterns

3.2.1. Commercial Sites

The mean percentage weekly mortality of lumpfish deployed at Gifas commercial site Røssøy can be seen in Figure 2. The mean percentage mortality (\pm SD) at week one for all four polar circle cages stocked with lumpfish was calculated as $19.8\% \pm 4.3\%$. Mean weekly mortality decreased sharply to $1.8\% \pm 0.6\%$ at week two onwards until week nine, when mean weekly mortality increased to $4.8\% \pm 1.7\%$. Mean weekly temperature slightly increased from $4.7\text{ }^{\circ}\text{C}$ in week one to $5.9\text{ }^{\circ}\text{C}$ in week nine.

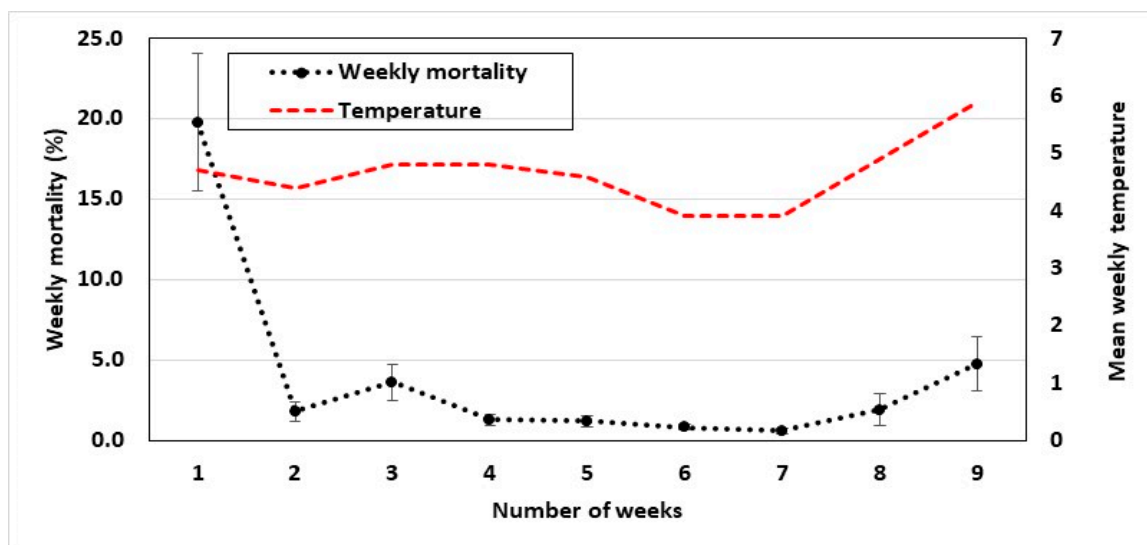


Figure 2. Percentage weekly mortality of lumpfish deployed at Gifas commercial site Røssøy. Red line indicates mean weekly temperature at the site.

The mean percentage weekly mortality of lumpfish deployed at Gifas commercial site Leirvika can be seen in Figure 3. The mean percentage mortality (\pm SD) remained under 1% for all groups during the 23-week deployment. Mean weekly mortality gradually increased through time, with the highest mean mortality of $0.8\% \pm 0.1\%$ recorded during weeks 21 and 23. Temperature decreased from a mean of $13.1\text{ }^{\circ}\text{C}$ in week one to $6.2\text{ }^{\circ}\text{C}$ in week 23.

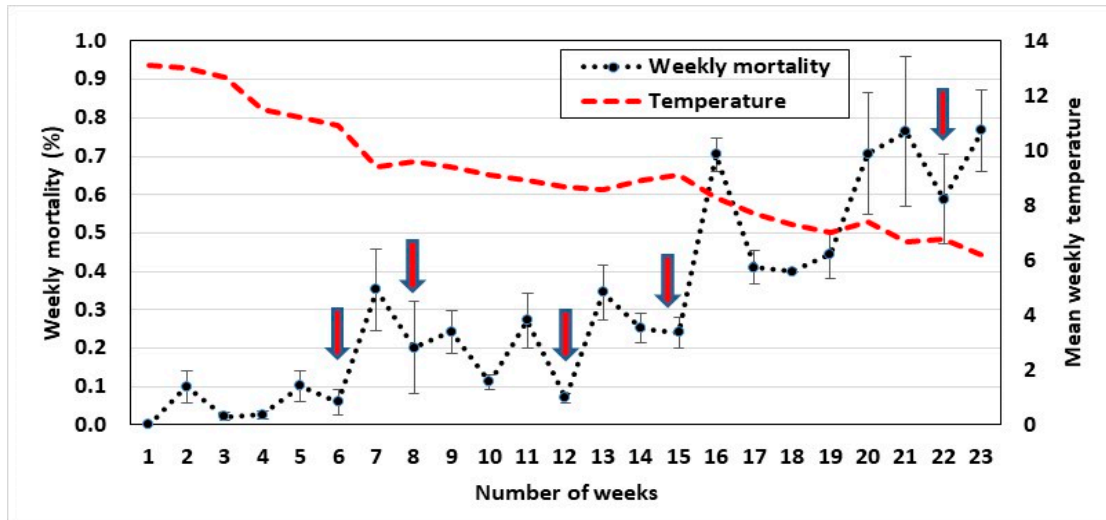


Figure 3. Percentage weekly mortality of lumpfish deployed at Gifas commercial site Leirvika. Red line indicates mean weekly temperature at the site. Arrows indicate when mechanical delousing was used in all cages.

The mean percentage weekly mortality of lumpfish deployed at Gifas commercial site Hallsteinhamn can be seen in Figure 4. The mean percentage mortality (\pm SD) remained low throughout for all subgroups, with weekly mean mortality rates ranging between 0 and 0.3% at week 1 and 1.2% recorded at week 15. Mean weekly temperature decreased from $8.0\text{ }^{\circ}\text{C}$ in week 1 to $4.2\text{ }^{\circ}\text{C}$ in week 37.

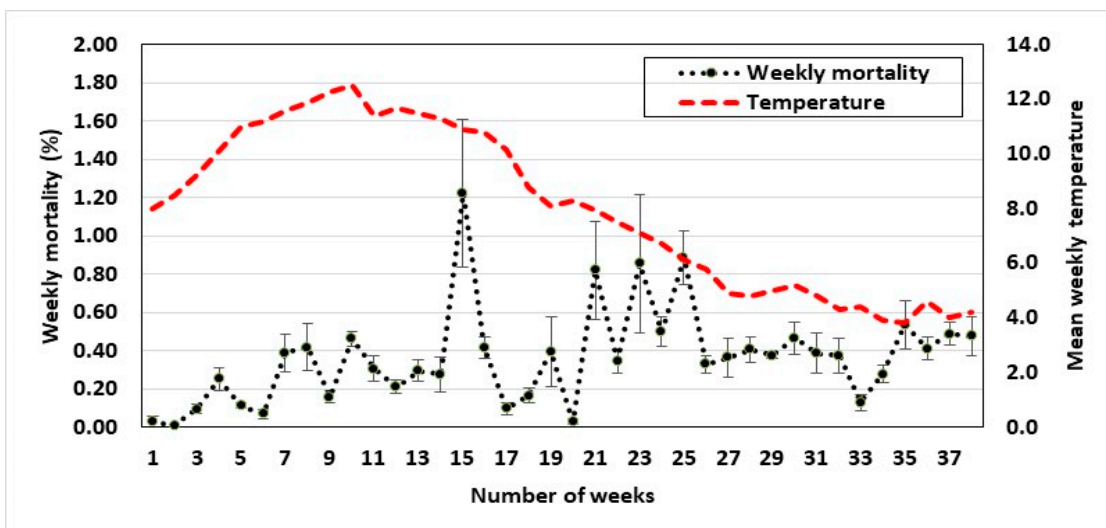


Figure 4. Percentage weekly mortality of lumpfish deployed at Gifas commercial site Hallsteinhamn. Red line indicates mean weekly temperature at the site.

3.2.2. Land-Based and Small-Scale Facilities

The mean percentage daily mortality of two lumpfish subgroups deployed at the land-based facility (MH) can be seen in Figure 5. The mean percentage mortality (\pm SD) for

subgroup K6 remained low throughout until day 41, when a daily percentage mortality of 4.3% was recorded. For subgroup K5, mortality rates remained low until day 34, when daily percentage mortality of 18.6% was recorded. This increased to 35.7% at day 38. Mortality rates fluctuated after this time point, but remained higher than subgroup K6. Mean daily temperature fluctuated between 7.0 °C at day 1 to 7.4 °C at day 48.

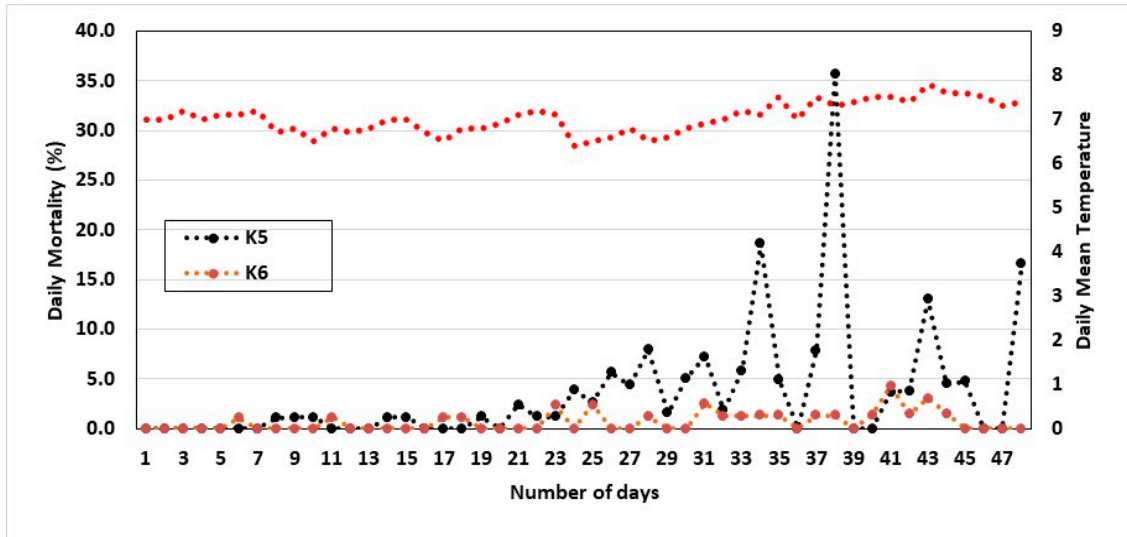


Figure 5. Percentage weekly mortality of lumpfish deployed at land-based facility (MH).

The mean percentage daily mortality of three lumpfish subgroups deployed at the small-scale facility (LH) can be seen in Figure 6. The mean daily percentage mortality (\pm SD) of the large lumpfish (444.6 g mean starting weight) remained low throughout, with the highest rate of 2.9% occurring at day 73, while daily percentage mortality of the medium lumpfish (80.1 g) peaked at day 62, when 10% mortality was recorded. Daily mortality decreased to low levels after this peak; however, it remained at levels of between 3.4% and 4.0% on several occasions. Daily mortality rates of the small lumpfish (42.1 g) remained at nil until day 56, when 2.8% was recorded. Daily mortality spiked on subsequent days, reaching a high of 12.5% at day 75. Daily mean temperature increased from 4.5 °C at day 1 to 12.0 °C at day 73.

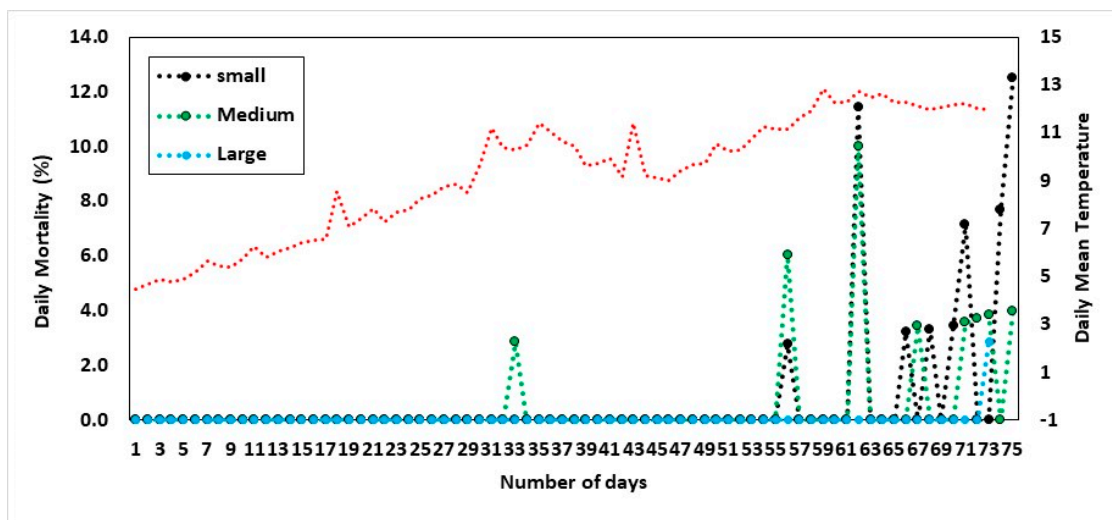


Figure 6. Percentage weekly mortality of three subgroups of lumpfish deployed at small-scale facility (LH). Subgroup small (42.1 g), subgroup medium (80.1 g), and subgroup large (444.6 g).

3.3. Cumulative Mortality

Cumulative mortality plotted against the primary causal agent of mortality for lumpfish groups deployed at commercial sites (SS) can be seen in Figure 7. The four groups with the primary cause of mortality identified as transporting had the highest percentage cumulative mortality compared to the other groups deployed at SS, while groups where the primary cause of mortality was identified as being either grading and/or mechanical delousing had similar cumulative mortality rates, ranging between 14.3% and 3.7%.

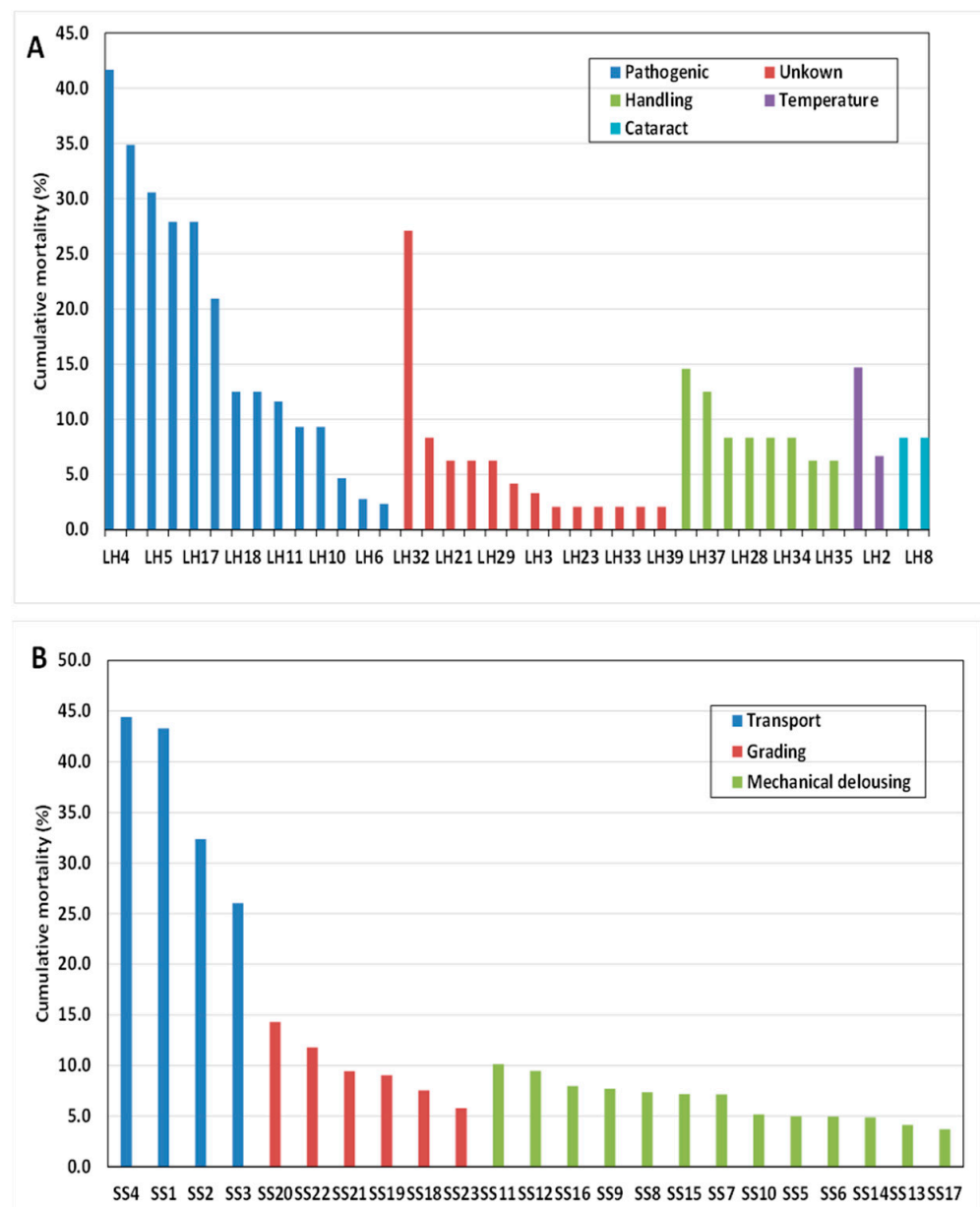


Figure 7. Percentage cumulative mortality for lumpfish groups plotted against primary cause of mortality for different groups (abbreviated on X axis) of lumpfish deployed at (A) small-scale and (B) commercial sites. See Table 1 for details of groups.

4. Discussion

Results from this study identified 10 primary causes of mortality in all the lumpfish groups deployed. Of these, handling/grading and mechanical delousing accounted for 21% and 20%, respectively, whilst bacterial infections accounted for 17% of all primary causes. Other primary causes of mortality included viral (3%), parasitic (5%), severe

cataract prevalence (3%), mortality during transfer to sea cages (6%), temperature gradients (3%), and dietary (2%). While it would be reasonable to expect causes of mortality in lumpfish populations to vary both from hatchery to hatchery but also geographically, there are evidently many reasons for mortality. Interestingly, mortality without a specific diagnosis accounted for 20% for the groups in the present study, but for 56% of the groups investigated by the Norwegian Veterinary Institute in 2012-14 [24]. Given that all causes of mortality were investigated for the primary causal agent in the present study, then perhaps the analytical diagnostic tools employed to determine causal factors need to be more extensively researched. Further understanding on lumpfish biological requirements and stress physiology is necessary to develop better methods that safeguard lumpfish well-being and meet their needs. Continuous health and welfare monitoring are essential to help identify when and what procedures and operations are detrimental and thus adapt and improve practices [13,14]. To encourage the adoption of health status monitoring in a standardized, more comparable way, practical and user-friendly approaches are necessary.

Stress and handling during transfer and stocking, together with the inevitable disease challenges in the pen environment, make the first few weeks at sea a critical time and acute mortalities often occur [25]. Stress and damage through events such as capture, handling, transport, or grading increase disease susceptibility and high mortality can follow these events. Lumpfish, despite their robust appearance, are very susceptible to skin damage and incidence is increased by their habit of adhering to substrates from which they are at times forcefully removed. A wide range of factors influence the welfare of cleaner-fish, and it is often the sites that put most effort into welfare that have the fewest disease problems (P. Reynolds, pers. comm.).

Health management of cleaner-fish in salmon pens can be challenging [25]. Often, primary factors that affect welfare and survival can facilitate secondary factors, thus further exacerbating an already worsening situation. In addition, often more than one pathogen is isolated from diseased fish, making it difficult to verify the primary cause of disease and death. The cause of death may be multifactorial and influenced by poor nutritional input and/or inadequate feeding strategies. Extreme environmental conditions may also be a factor, and studies have shown that both low temperatures (<4°C) [26] and high temperatures (18 °C) [27] can increase mortality. High mortality can also occur after transfer to commercial cages due to poor handling and has been linked to chemical and mechanical delousing practices, e.g., [9,28]. Further, mortalities have been attributed to net cleaning, bath treatments, or other operations.

All fish groups transferred to Gifas had evidence of cataracts detected either prior to or immediately after transfer. For fish groups screened for eye health and transferred to either small-scale facility, cataract prevalence varied between 0 and 29.2% upon transfer, and for commercial cages, prevalence varied between 12.1% and 79.6%. There was a tendency for prevalence to increase in all groups, with some groups approaching 90% prevalence and the severity of cataracts increasing with time. It is known that cataracts can affect how efficiently fish catch natural feed, such as in Arctic char (*Salvelinus alpinus*), where fish with no cataracts caught zooplankton more effectively than fish with cataracts [29]. However, a previous study [12] showed that a low degree of cataracts in lumpfish did not affect their ability to detect and consume sea lice or their overall feed intake and growth negatively. Regardless of some fish being able to find food items and maintain growth, the high proportion of fish in this study observed to be losing weight indicates that fish with moderate to severe cataracts cannot maintain their growth potential and ultimately health may be impaired. Mortality is affected by cataracts to the extent that they affect feed intake, growth and weakened immunity and robustness of the fish [30]. The average cataract index in the present study was generally low for most groups at the start of the deployment period, but generally increased with time. Previous studies have recorded a low cataract index in lumpfish [31], that there was no systematic relationship between growth and cataract index that could indicate that cataracts had an impact on the growth rate, or high SGR increased the risk of developing cataracts.

Previous studies have shown that low water temperatures may be a causal factor in reduced welfare and lower grazing performance of lumpfish (Gifas, unpublished data). Small lumpfish may be directly challenged when transferred to an open net-pen environment in winter, when most commercial salmon farms are routinely setting out juvenile lumpfish at an average weight of 30 g in commercial cages. Wild juvenile lumpfish spend their early stages in the physically challenging intertidal zone, where they are reported to grow rapidly before migrating to colder feeding grounds [32], where they may better exploit the differences in temperature. Studies of wild larval and juvenile lumpfish growth patterns show a rapid increase in growth rate from mid-July to August before decreasing in August–September [33,34].

In the present study, cumulative mortality rates were similar for groups deployed at small- and large-scale research facilities. The similarities in cumulative mortality between both sea-based facilities indicate that the different stressors that were identified as prime causes at each site were challenging at the same levels. For lumpfish deployed at LH, the primary cause of mortality identified as pathogenic generally had the highest percentage cumulative mortality compared to the other groups deployed, while for lumpfish deployed at large-scale research facilities, transporting, grading, and mechanical delousing had the highest percentage cumulative mortality. Thus, different stressors were evident dependent on site conditions, with lumpfish deployed in commercial cages more likely to be exposed to more mechanical treatments, such as transferring, grading, splitting of cages, and mechanical delousing, while for small-scale cages, repeated handling due to intensive sampling regimes may be the trigger for bacterial outbreaks and a high percentage of mortality with no identifiable cause.

5. Conclusions

Results from this study show that causes of mortality varied within and between sites. For lumpfish in land-based facilities as well as those deployed in small-scale sea pens, the primary cause of mortality was identified as pathogenic, while for lumpfish deployed in large-scale sea pens, transporting, grading, and mechanical delousing were the primary causes of mortality. The results indicate that more research is required to clarify best practices in both commercial hatcheries and salmon cages. Continuous health and welfare monitoring are essential to help identify when and what procedures and operations are detrimental and thus adapt and improve practices.

Author Contributions: P.R., A.K.D.I. and L.B. compiled and reviewed findings and analysed new data, wrote the article, and reviewed the manuscript. All authors have read and agreed to the published version of the manuscript.

Funding: Financial support was given by the Norwegian Seafood Research Found (EFFEKTIV 901652, DOKUMENTAR 901692) and the Icelandic Research Council (Rannís, 186971-0611).

Institutional Review Board Statement: The study was conducted according to the Animal Welfare Act (LOV- 2009-06-19-97). The present field trials were approved by the local responsible laboratory animal science specialist under the surveillance of the Norwegian Animal Research Authority (NARA) and registered by the authority by the following registration numbers: FOTS ID 7475, FOTS ID 20736 and FOTS ID 8246.

Informed Consent Statement: Not applicable.

Data Availability Statement: Not applicable.

Acknowledgments: The authors would like to thank the technical staff at the lumpfish production sites involved for valuable assistance and data sharing.

Conflicts of Interest: The authors declare no conflict of interest.

References

1. Imsland, A.K.; Reynolds, P.; Eliassen, G.; Hangstad, T.A.; Foss, A.; Vikingstad, E.; Elvegård, T.A. The use of lumpfish (*Cyclopterus lumpus* L.) to control sea lice (*Lepeophtheirus salmonis* Krøyer) infestations in intensively farmed Atlantic salmon (*Salmo salar* L.). *Aquaculture* **2014**, *424–425*, 18–23. [CrossRef]
2. Imsland, A.K.; Reynolds, P.; Eliassen, G.; Hangstad, T.A.; Foss, A.; Vikingstad, E.; Elvegård, T.A. Notes on the behaviour of lumpfish with and without Atlantic salmon present. *J. Ethol.* **2014**, *32*, 117–122. [CrossRef]
3. Imsland, A.K.; Reynolds, P.; Eliassen, G.; Hangstad, T.A.; Nytrø, A.V.; Foss, A.; Vikingstad, E.; Elvegård, T.A. Assessment of growth and sea lice infection levels in Atlantic salmon stocked in small-scale cages with lumpfish. *Aquaculture* **2014**, *433*, 137–142. [CrossRef]
4. Imsland, A.K.; Reynolds, P.; Eliassen, G.; Hangstad, T.A.; Nytrø, A.V.; Foss, A.; Vikingstad, E.; Elvegård, T.A. Feeding preferences of lumpfish (*Cyclopterus lumpus* L.) maintained in open net-pens with Atlantic salmon (*Salmo salar* L.). *Aquaculture* **2015**, *436*, 47–51. [CrossRef]
5. Mattilsynet. Nasjonal tilsynskampanje 2018/2019 Velferd Hos Rensefisk. In Norwegian; 2020. Available online: https://www.mattilsynet.no/fisk_og_akvakultur/akvakultur/rensefisk/rensefiskkampanjen_20182019.30882 (accessed on 1 July 2022).
6. Martos-Sitcha, J.A.; Mancera, J.M.; Prunet, P.; Magnoni, L.J. Editorial: Welfare and Stressors in Fish: Challenges Facing Aquaculture. *Front. Physiol.* **2020**, *11*, 162. [CrossRef]
7. Grefsrud, E.S.; Svåsand, T.; Glover, K.; Husa, V.; Hansen, P.K.; Samuelsen, O.; Sandlund, N.; Stien, L.H. Risikoreport Norsk Fiskeoppdrett 2019—Miljøeffekter av lakseoppdrett. Fisker og Havet 2019-5. In Norwegian with Summary in English. Available online: <https://www.hi.no/hi/nettrapporter/fisken-og-havet-2019-5> (accessed on 1 July 2022).
8. Størkersen, K.; Amundsen, V. Resultat av Spørreundersøkelse til Matfisklokaliteter med Rensefisk. 2019. In Norwegian. Available online: www.samforsk.no (accessed on 2 July 2022).
9. Stien, L.H.; Størkersen, K.V.; Gåsnes, S.K. Analyse av Dødelighetsdata fra Spørreundersøkelse om Velferd hos Rensefisk. Rapport fra Havforskningen 2020-6. Available online: <https://www.hi.no/hi/nettrapporter/rapport-fra-havforskningen-2020-6#sec-4> (accessed on 2 July 2022).
10. Jonassen, T.M.; Lein, I.; Nytrø, A.V. Hatchery management of lumpfish. In *Cleaner Fish Biology and Aquaculture Applications*; Treasurer, J.W., Ed.; 5M Publications Ltd.: Sheffield, UK, 2018; pp. 1114–1136.
11. Imsland, A.K.; Reynolds, P.; Jonassen, T.M.; Hangstad, T.A.; Noble, T.; Wilson, W.; Mackie, J.A.; Elvegård, T.A.; Urskog, T.C.; Mikalsen, B. Comparison of diet composition, feeding, growth and health of lumpfish (*Cyclopterus lumpus* L.) fed either feed blocks or pelleted commercial feed. *Aquac. Res.* **2019**, *50*, 1952–1963. [CrossRef]
12. Imsland, A.K.D.; Reynolds, P.; Jonassen, T.M.; Hangstad, T.A.; Elvegård, T.A.; Urskog, T.C.; Hanssen, A.; Mikalsen, B. Effects of different feeding frequencies on growth, cataract development and histopathology of lumpfish (*Cyclopterus lumpus* L.). *Aquaculture* **2019**, *501*, 161–168. [CrossRef]
13. Noble, C.; Iversen, M.H.; Lein, I.; Kolarevic, J.; Johansen, L.H.; Marit Berge, G.; Espmark, Å.M. Rensvel OWI Fact Sheet Series: An Introduction to Operational and Laboratory-Based Welfare Indicators for Lumpfish (*Cyclopterus lumpus* L.). 2020. Available online: <https://nofima.no/publikasjon/1701900/> (accessed on 27 June 2022).
14. Rimstad, E.; Basic, D.; Gulla, S.; Hjeltne, B.; Mortensen, S. Report from the Norwegian Scientific Committee for Food and Environment (VKM) 2017:32 Risk Assessment of Fish Health Associated with the Use of Cleaner Fish in Aquaculture Opinion of the Panel on Animal Health and Welfare of the Norwegian Scientific Committee for Food and Environment. 2017. Available online: www.vkm.no (accessed on 27 June 2022).
15. Imsland, A.K.D.; Reynolds, P.; Lorentzen, M.; Eilertsen, R.A.; Micallef, G.; Tvenning, R. Improving survival and health of lumpfish (*Cyclopterus lumpus* L.) by the use of feed blocks and operational welfare indicators (OWIs) in commercial Atlantic salmon cages. *Aquaculture* **2020**, *527*, 735476. [CrossRef]
16. Gutierrez Rabadan, C.; Spreadbury, C.; Consuegra, S.; Garcia de Leaniz, C. Development, validation and testing of an Operational Welfare Score Index for farmed lumpfish *Cyclopterus lumpus* L. *Aquaculture* **2021**, *531*, 735777. [CrossRef]
17. Imsland, A.K.; Reynolds, P.; Eliassen, G.; Hangstad, T.A.; Nytrø, A.V.; Foss, A.; Vikingstad, E.; Elvegård, T.A. Assessment of suitable substrates for lumpfish in sea pens. *Aquac. Int.* **2015**, *23*, 639–645. [CrossRef]
18. Imsland, A.K.; Reynolds, P.; Eliassen, G.; Mortensen, A.; Hansen, Ø.J.; Puvanendran, V.; Hangstad, T.A.; Jónsdóttir, Ó.D.B.; Emaus, P.A.; Elvegård, T.A.; et al. Is cleaning behavior in lumpfish (*Cyclopterus lumpus*) parentally controlled? *Aquaculture* **2016**, *459*, 156–165. [CrossRef]
19. Imsland, A.K.; Reynolds, P.; Nytrø, A.V.; Eliassen, G.; Hangstad, T.A.; Jónsdóttir, Ó.D.B.; Emaus, P.A.; Elvegård, T.A.; Lemmens, S.C.A.; Rydland, R.; et al. Effects of lumpfish size on foraging behaviour and co-existence with sea lice infected Atlantic salmon in sea cages. *Aquaculture* **2016**, *465*, 19–27. [CrossRef]
20. Imsland, A.K.D.; Frogg, N.E.; Stefansson, S.O.; Reynolds, P. Improving sea lice grazing of lumpfish (*Cyclopterus lumpus* L.) by feeding live feeds prior to transfer to Atlantic salmon (*Salmo salar* L.) net-pens. *Aquaculture* **2019**, *511*, 734224. [CrossRef]
21. Imsland, A.K.D.; Reynolds, P.; Hangstad, T.A.; Madura, S.; Hagen, S.; Jónsdóttir, Ó.D.B.; Spetland, F.; Lindberg, K.S. Quantification of grazing efficacy, growth and health score of different lumpfish (*Cyclopterus lumpus* L.) families: Possible size and gender effects. *Aquaculture* **2021**, *530*, 735925. [CrossRef]
22. Imsland, A.K.D.; Reynolds, P.; Remen, M.; Bloch-Hansen, K.; Sagerup, K.; Hemmingsen, W.; Mathisen, R.; Myklebust, E.A. The possible use of lumpfish against *Caligus elongatus*: A mini review. *J. Oce. Uni. China* **2020**, *19*, 1133–1139. [CrossRef]

23. Imsland, A.K.D.; Reynolds, P. In lumpfish we trust? The efficacy of lumpfish to control *Lepeophtheirus salmonis* infestations on farmed Atlantic salmon: A review. *Fishes* **2022**, *7*, 220. [[CrossRef](#)]
24. Beiring, E. Sluttrapport for FHF-Prosjektet Rensefisk Tapsårsaker og Forbyggende Tiltak (900818). In Norwegian. 2015. Available online: <https://www.fhf.no/prosjekter/prosjektbasen/900818/> (accessed on 27 June 2022).
25. Bornø, G.; Alarcón, M.; Linaker, M.; Colquhoun, D.; Nilsen, H.; Gu, J.; Gjerset, B.; Haakon, H.; Thoen, E.; Gulla, S.; et al. *Akutt dødelighet hos Rognkjeks (Cyclopterus lumpus) i 2015*; The Norwegian Veterinary Institute: Oslo, Norway, 2016; (In Norwegian). Available online: www.vetinst.no (accessed on 27 June 2022).
26. Imsland, A.K.; Hanssen, A.; Reynolds, P.; Nytrø, A.V.; Jonassen, T.M.; Hangstad, T.A.; Elvegård, T.A.; Urskog, T.C.; Mikalsen, B. It works! Lumpfish can significantly lower sea lice infections in large scale salmon farming. *Biol. Open* **2018**, *7*, bio036301. [[CrossRef](#)]
27. Hvas, M.; Folkedal, O.; Imsland, A.; Oppedal, F. Metabolic rates, swimming capabilities, thermal niche and stress response of the lumpfish, *Cyclopterus lumpus*. *Biol. Open* **2018**, *7*, bio.036079. [[CrossRef](#)]
28. Kousoulaki, K.; Migaud, H.; Davie, A. Cleaner fish species nutrition and feeding practices. In *Cleaner Fish Biology and Aquaculture Applications*; Treasurer, J.W., Ed.; 5M Publishing Ltd.: Sheffield, UK, 2018; pp. 179–196.
29. Voutilainen, A.; Figueiredo, K.; Huuskonen, H. Effects of the eye fluke *Diplostomum spathaceum* on the energetics and feeding of Arctic charr *Salvelinus alpinus*. *J. Fish. Biol.* **2008**, *73*, 2228–2237. [[CrossRef](#)]
30. Breck, O.; Sveier, H. Growth and cataract development in two groups of Atlantic salmon (*Salmo salar* L) post smolts transferred to sea with a four-week interval. *Bull. Eur. Ass. Fish. Pathol.* **2001**, *21*, 91–103.
31. Jonassen, T.; Hamadi, M.; Remø, S.C.; Waagbø, R. An epidemiological study of cataracts in wild and farmed lumpfish (*Cyclopterus lumpus* L.) and the relation to nutrition. *J. Fish. Dis.* **2017**, *12*, 1903–1914. [[CrossRef](#)] [[PubMed](#)]
32. Hedeholm, R.; Blicher, M.E.; Grønkjær, P. First estimates of age and production of lumpsucker *Cyclopterus lumpus* in Greenland. *Fish. Res.* **2014**, *149*, 1–4. [[CrossRef](#)]
33. Ingólfsson, A.; Krisjánsson, B.K. Diet of juvenile lumpsucker *Cyclopterus lumpus* (Cyclopteridae) in floating seaweed: Effects of ontogeny and prey availability. *Copeia* **2002**, *2002*, 472–476. [[CrossRef](#)]
34. Moring, J.R. Intertidal growth of larval and juvenile lumpfish in Maine: A 20-year assessment. *Northeast. Nat.* **2001**, *8*, 347–354. [[CrossRef](#)]