

Size selection in the Norwegian demersal seine haddock fishery at fishing depth, surface and total selection

Ólafur Arnar Ingólfsson, Odd-Børre Humborstad, Manu Sistiaga

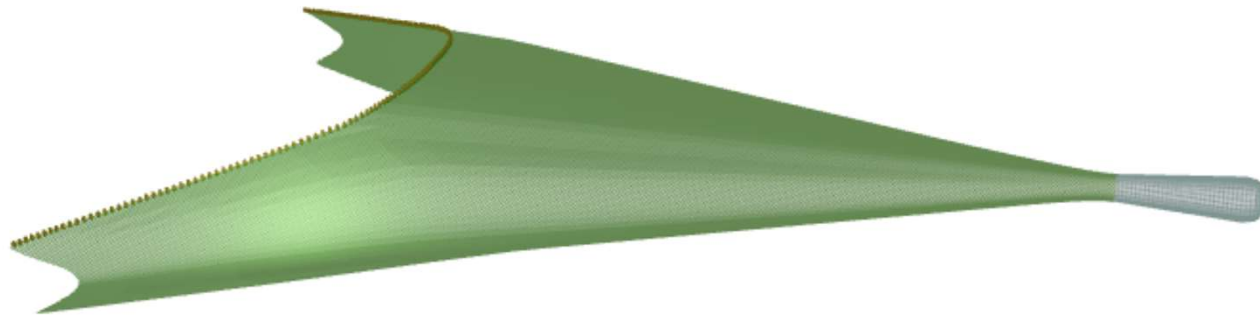
ICES-FAO FTFB - Mazara del Vallo - 15-20 May 2025

Background

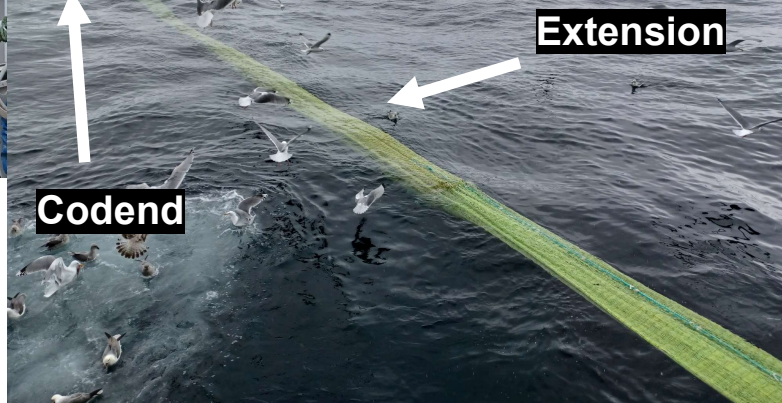
- Mesh size regulations → Thick double twine
- Square mesh codends → Codend extensions, 15-45 m
- Bigger vessels, bigger seines, large and rough-built
- Considerable surface selection
- Impression of «poor» size selectivity
- Desirable to select at fishing depth



Codend extensions

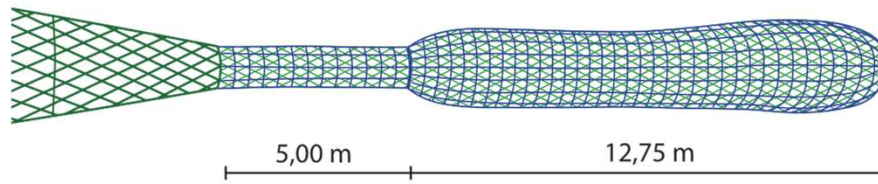


Vessel and Seine

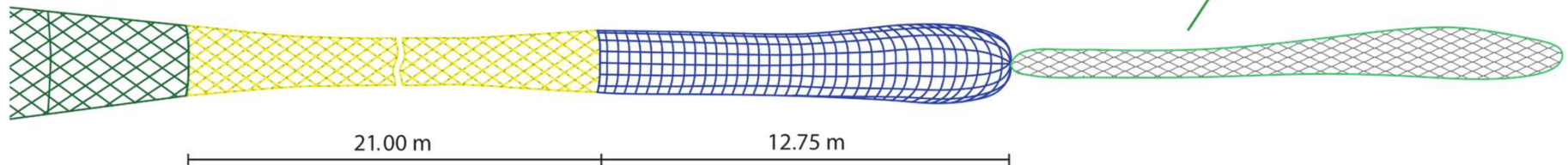


Methods – what tested

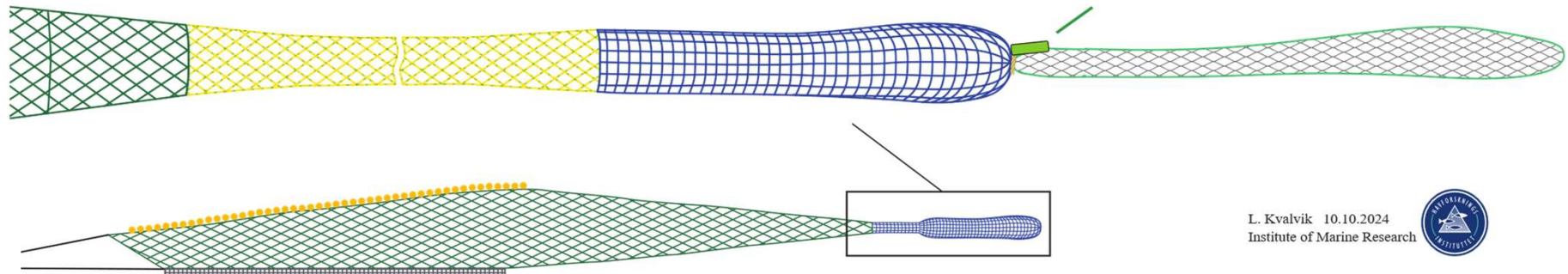
(a) Codend with 44 mm inner lining



(b) Diamond mesh extension: 130 mm
8 mm PE twine, 100 meshes circumference Square mesh codend: 125 mm
7.5 mm twine - 7.0 m circumference Collecting bag 44 mm

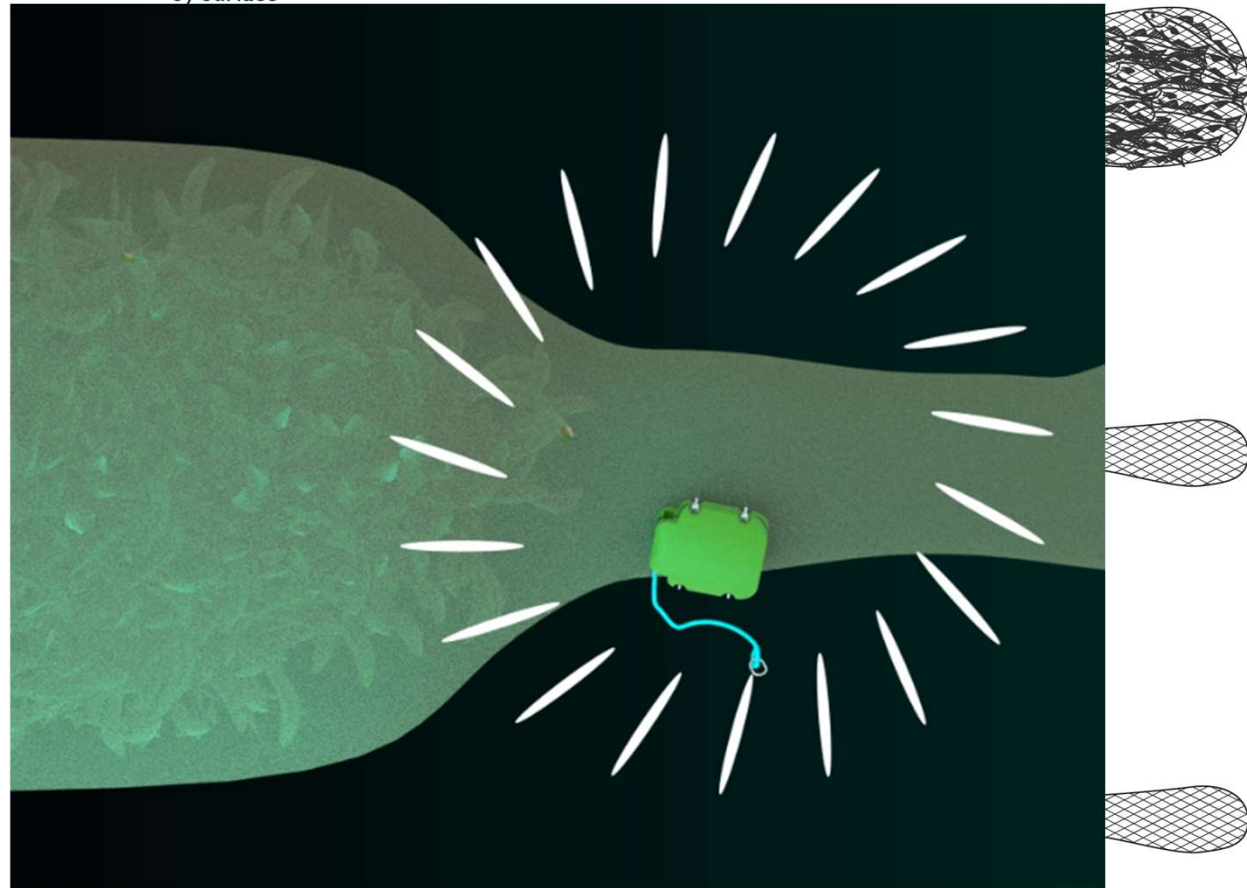


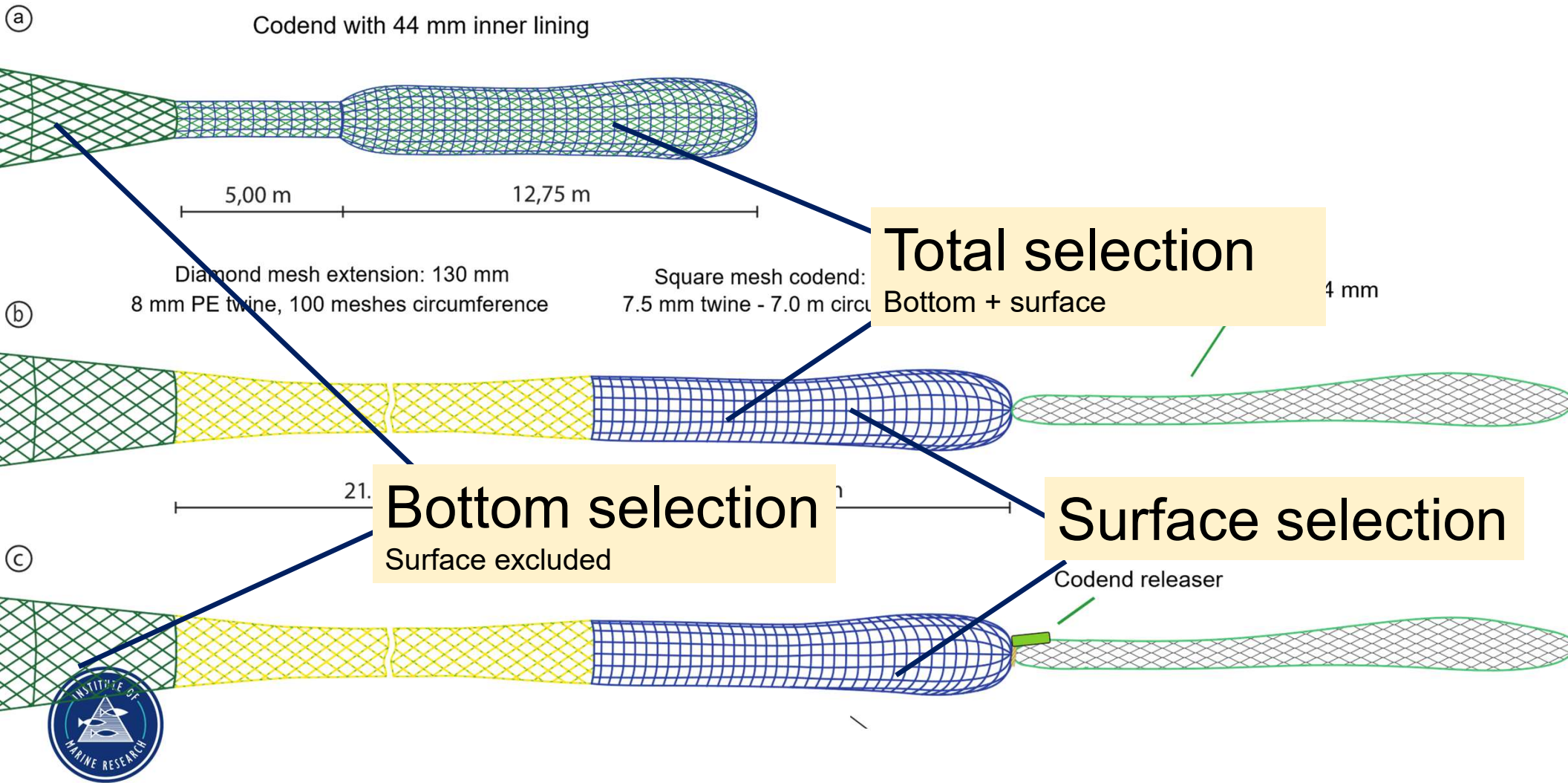
(c) Codend releaser

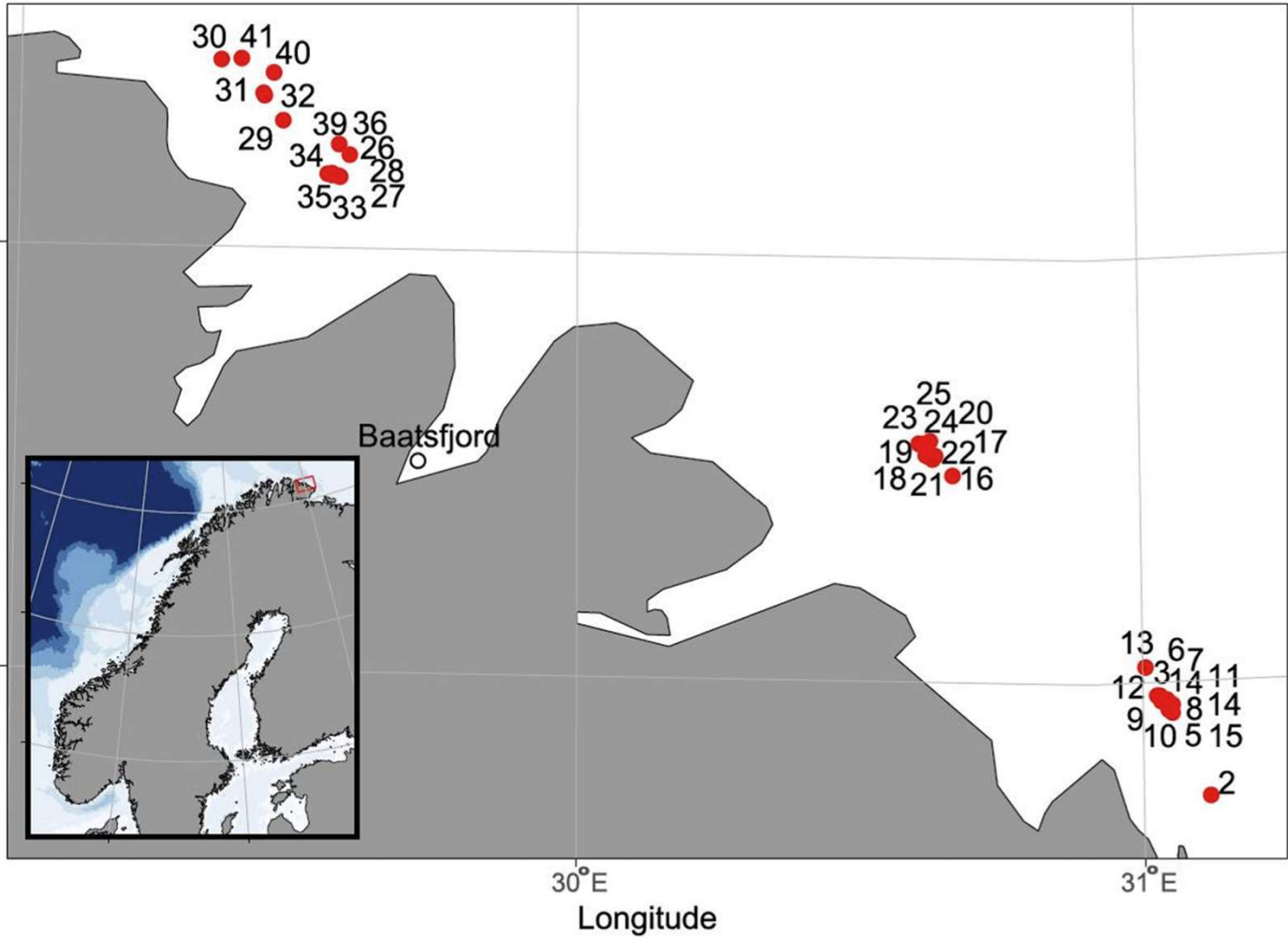


Methods – how tested

3) Surface



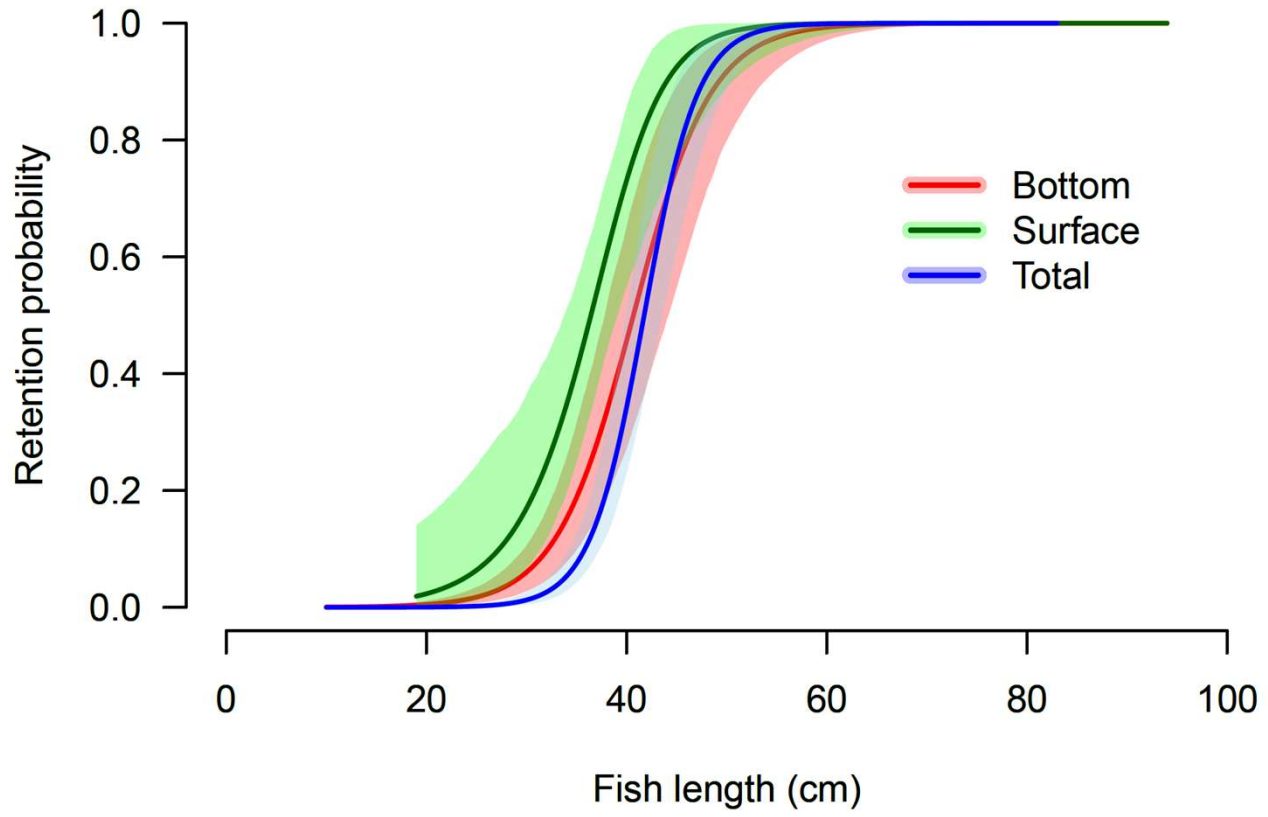




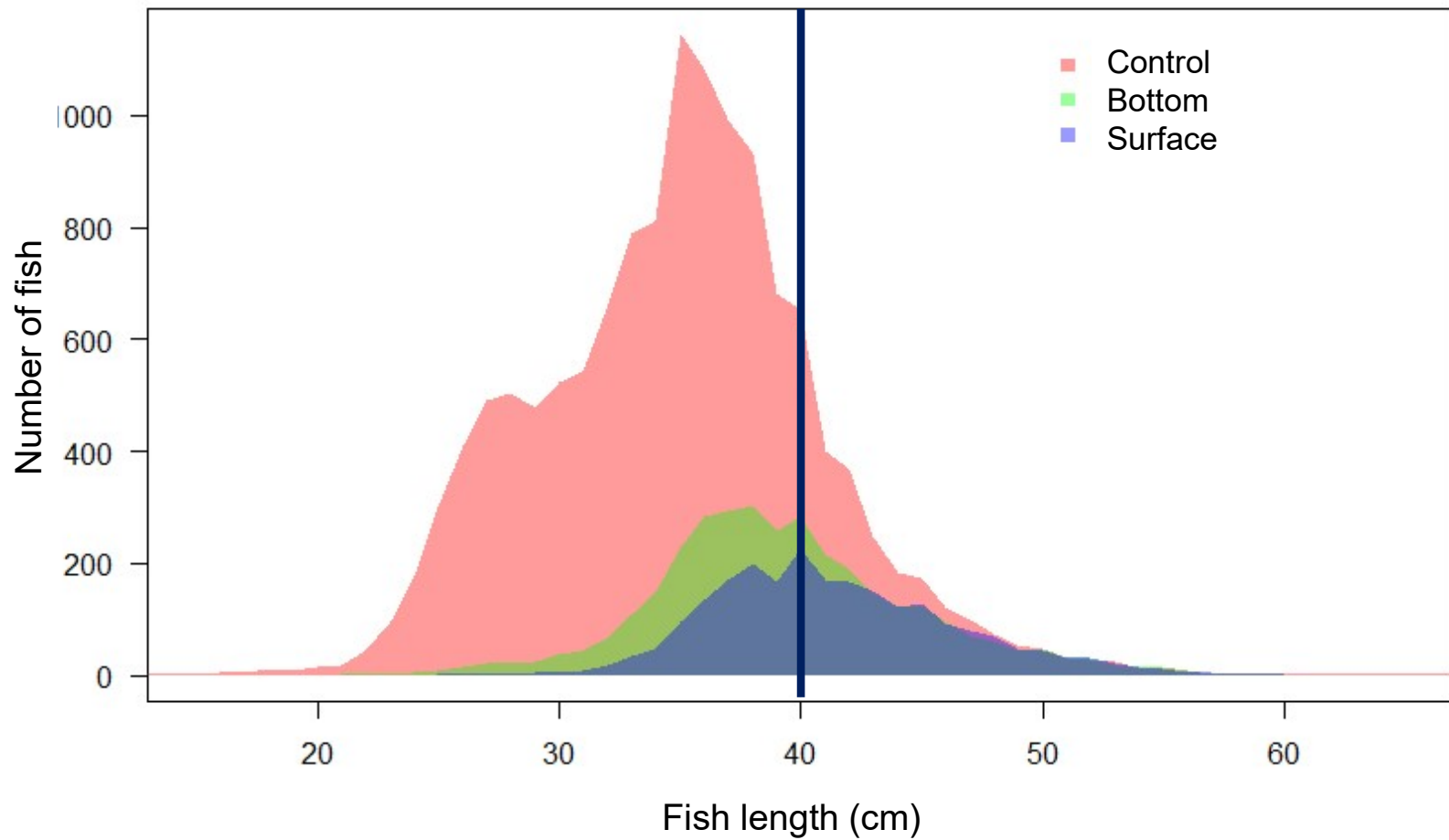
Results - Haddock

	L50 +/- CI		
Surface	33.8	36.9	39.1
Total	39.9	41.5	43.5
Bottom	37.8	40.3	43.7

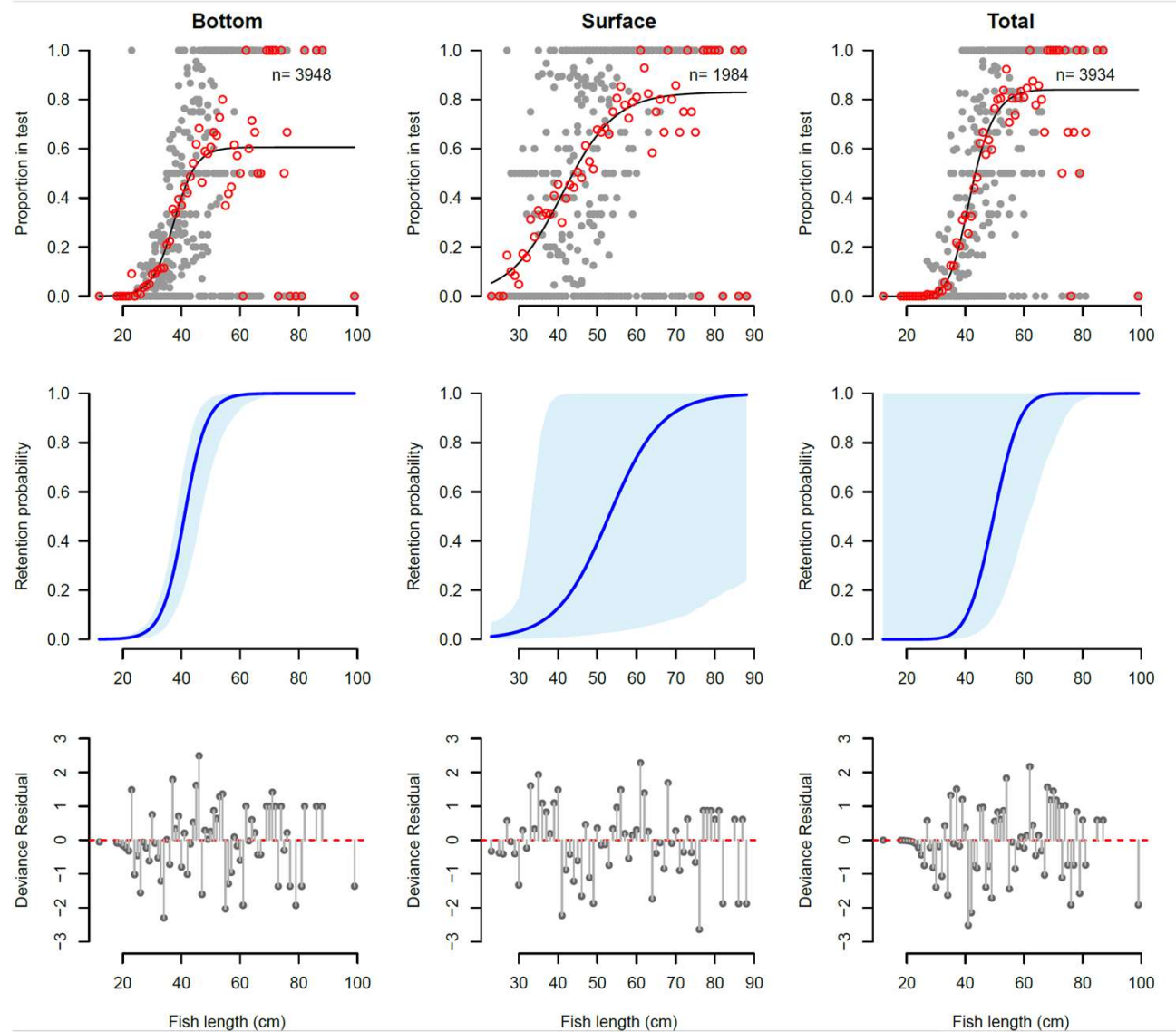
	SR +/- CI		
Surface	5.8	8.3	15.6
Total	4.8	5.8	7.2
Bottom	6.9	8.1	10.1



Size distribution Haddock



Results - Cod



	L50 +/- CI		
Bottom	35.0	42.1	47.5
Surface	0.03	49.5	61.6
Total	25.2	45.0	53.7

	SR +/- CI		
Bottom	3.61	5.67	15.54
Surface	1.22	9.02	13.49
Total	2.58	8.32	13.04



Thank you for your attention

